

| | | | |
|--|------------------------|-----------------------------|---|
| WAAS CH 82716 W12A | APP CRS 118° | Rwy Idg TDZE Apt Elev | 6501 918 918 |
|--|------------------------|-----------------------------|---|

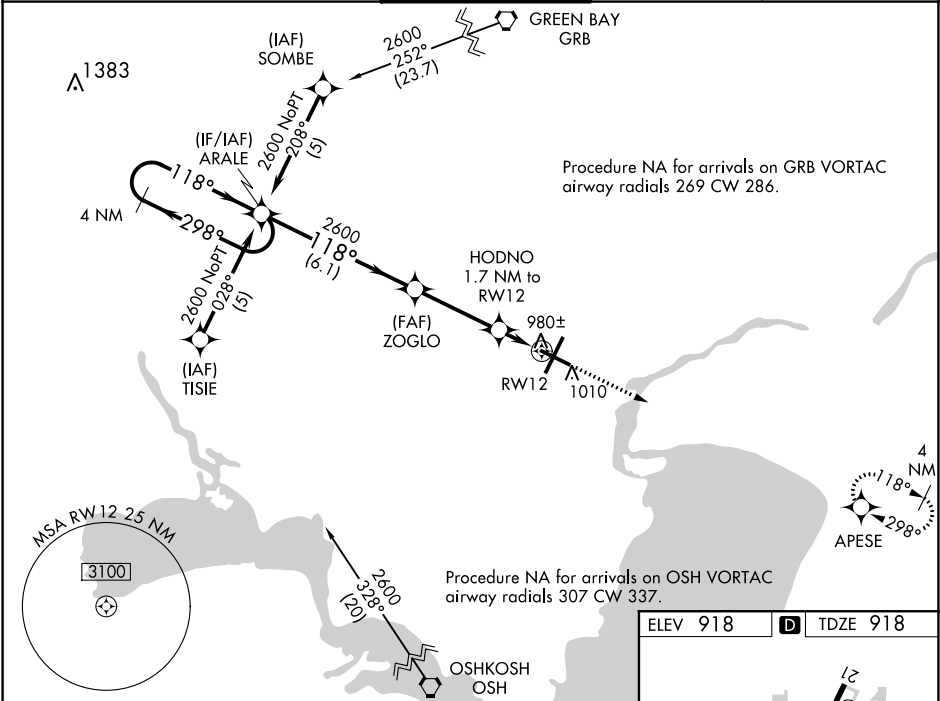
RNAV (GPS) RWY 12

APPLETON INTL (ATW)

⚠ For uncompensated Baro-VNAV systems, LNAV/VNAV NA below -16°C (4°F) or above 47°C (116°F). DME/DME RNP-0.3 NA. When local altimeter not received, use Green Bay-Austin Straubel Intl altimeter setting and increase call DA 81 feet and all MDA 100 feet. Increase LPV and LNAV/VNAV all Cats and LNAV Cat C/D visibility ½ mile. Baro-VNAV and VDP NA when using Green Bay-Austin Straubel altimeter setting.

MISSED APPROACH:
Climb to 2700 direct APESE and hold.

| | | | | |
|-----------------------|--|--|-------------------------|-------------------------|
| ATIS 127.15 | GREEN BAY APP CON★ 126.3 338.2 | APPLETON TOWER★ 119.6 (CTAF) 0 | GND CON 121.7 | UNICOM 122.95 |
|-----------------------|--|--|-------------------------|-------------------------|



| | | | | | |
|----------------------|-----------------------|--|-------------------------|-----------------------|------------|
| 4 NM Holding Pattern | | VGSi and RNAV glidepath not coincident (VGSi Angle 3.00/TCH 35). | | 2700 | APESE |
| ARALE | | ZOGLO | | HODNO 1.7 NM to RW12 | *RNAV only |
| 2600 ← 298° | | 2600 | | *0.9 NM to RW12 | |
| 118° → | | 118° | | RW12 | |
| GP 3.00° | | *1500 | | | |
| TCH 50 | | 6.1 NM | | 3.4 NM | 0.8 |
| | | | | 0.9 | |
| CATEGORY | A | B | C | D | |
| LPV DA | | 1118-¾ | 200 (200-¾) | | |
| LNAV/ VNAV DA | | 1329-1½ | 411 (500-1½) | | |
| LNAV MDA | | 1240-1 | 322 (400-1) | | |
| CIRCLING | 1340-1 422 (500-1) | 1380-1 462 (500-1) | 1400-1½ 482 (500-1½) | 1480-2 562 (600-2) | |

