

WAAS CH 93517 W21A	APP CRS 208°	Rwy Idg 8002 TDZE 879 Apt Elev 918
--	------------------------	---

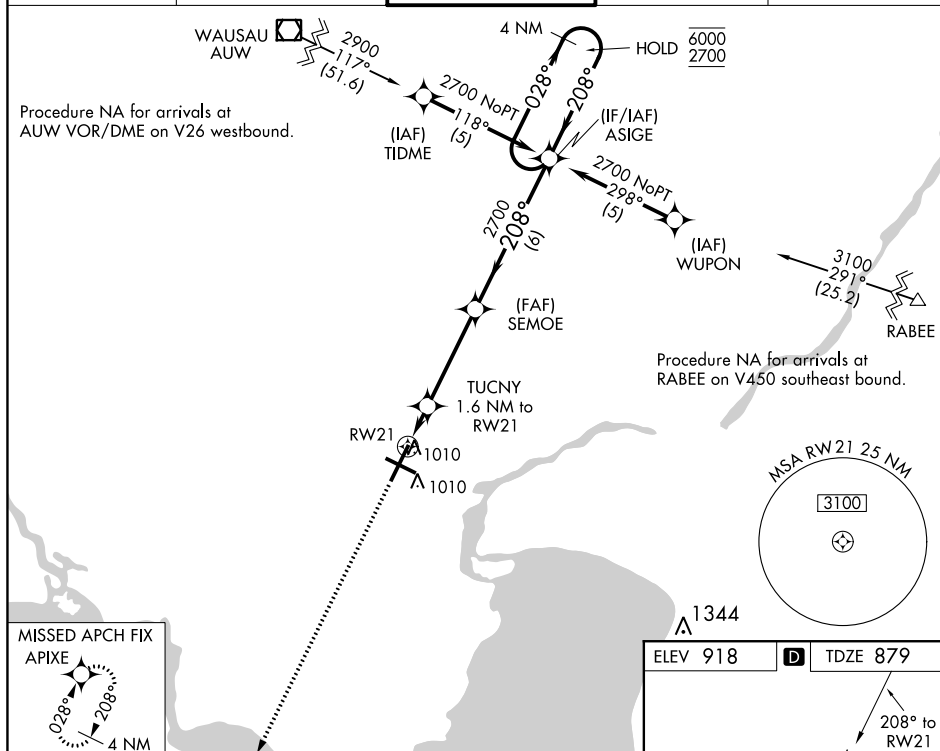
RNAV (GPS) RWY 21
APPLETON INTL (ATW)

RNP APCH.

T Rwy 21 helicopter visibility reduction below 1 SM NA. For uncompensated Baro-VNAV systems, LNAV/VNAV NA below -16°C or above 47°C.

MISSED APPROACH:
Climb to 2900 direct
APIXE and hold.

ATIS 127.15	GREEN BAY APP CON★ 126.3 338.2	APPLETON TOWER★ 119.6(CTAF)0	GND CON 121.7	UNICOM 122.95
----------------	-----------------------------------	---------------------------------	------------------	------------------



VGS1 and RNAV glidepath not coincident
(VGS1 Angle 3.00/TCH 47).

CATEGORY	A	B	C	D
LPV DA		1129-1	250 (300-1)	
LNAV/VNAV DA		1261-1¼	382 (400-1)	
LNAV MDA	1280-1	401 (400-1)	1280-1¼	401 (400-1¼)
C CIRCLING	1340-1 422 (500-1)	1380-1 462 (500-1)	1400-1½ 482 (500-1½)	1480-2 562 (600-2)

