

WAAS CH <b>56223</b> <b>W03A</b>	APP CRS <b>028°</b>	Rwy Idg TDZE <b>888</b> Apt Elev <b>918</b>
--	------------------------	---

RNAV (GPS) RWY 3

APPLETON INTL (ATW)

▼

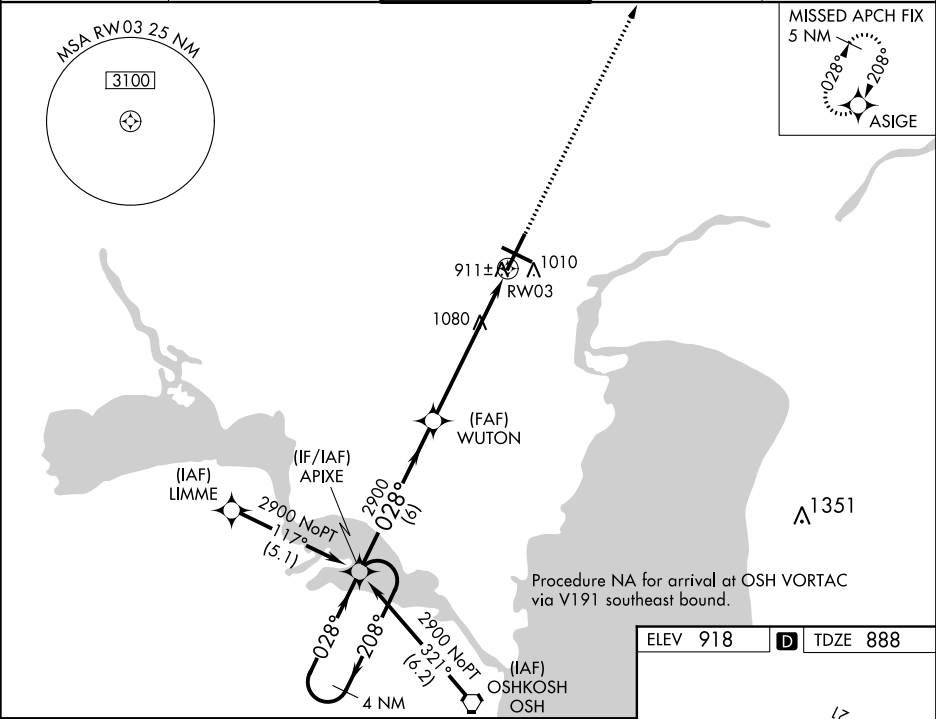
▲

Baro-VNAV NA below -16°C (4°F). DME/DME RNP-0.3 NA. When local altimeter setting not received use Green Bay-Austin Straubel Intl altimeter setting and increase all DAs/MDAs 100 feet. Baro/VNAV and VDP NA when using Green Bay-Austin Straubel Intl altimeter setting. For inoperative MALSR increase LPV visibility to RVR 4000 all Cats.

MALSR

MISSED APPROACH:  
Climb to 2700 direct ASIGE and hold.

ATIS <b>127.15</b>	GREEN BAY APP CON★ <b>126.3 338.2</b>	APPLETON TOWER★ <b>119.6(CTAF) 0</b>	GND CON <b>121.7</b>	UNICOM <b>122.95</b>
-----------------------	--	---	-------------------------	-------------------------



4 NM Holding Pattern		APIXE	WUTON	2700	ASIGE
GP 3.00° TCH 47					
		6 NM	4.6 NM	1.5 NM	
CATEGORY	A	B	C	D	
LPV DA	1138/24		250 (300-½)		
LNAV/VNAV DA	1232/40		344 (400-¾)		
LNAV MDA	1400/24	512 (500-½)	1400/50 512 (500-1)	1400/60 512 (500-¼)	
CIRCLING	1400-1	482 (500-1)	1400-1½ 482 (500-½)	1480-2 562 (600-2)	

