
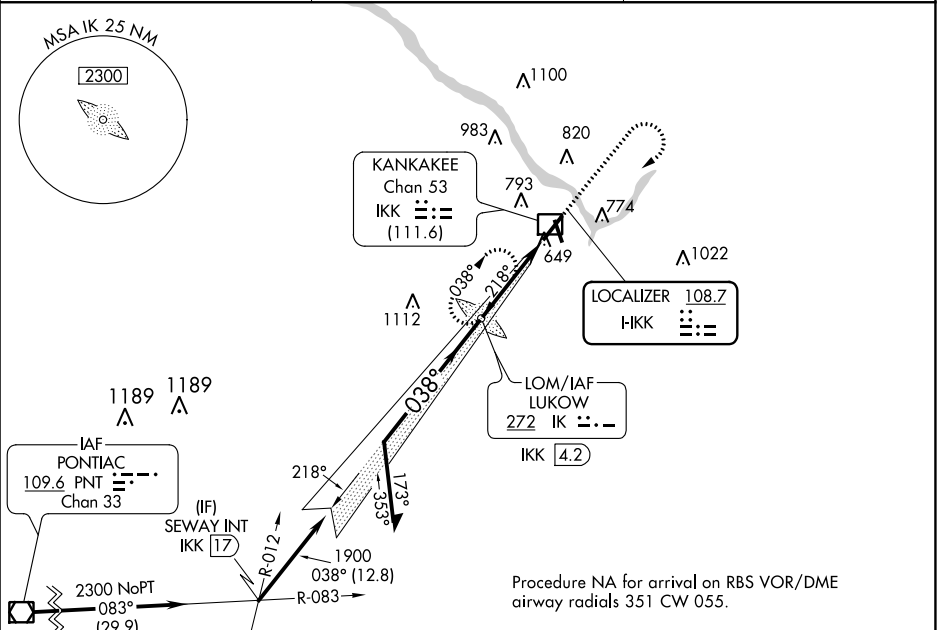


LOC I- <b>IKK</b> <b>108.7</b>	APP CRS <b>038°</b>	Rwy ldg TDZE Apt Elev
		<b>5981</b> <b>624</b> <b>630</b>

ILS or LOC RWY 4

GREATER KANKAKEE (IKK)

ADF required.		<div>MALSR</div> <div></div>	MISSED APPROACH: Climb to 2300 then right turn direct LUKOW LOM and hold.
<div><div><div><div><div></div><div></div></div><div></div></div><div><div><div></div><div></div></div><div></div></div><div><div><div></div><div></div></div><div></div></div></div><div>Circling to Rwy 16, 34 NA at night. For inop ALS, increase S-LOC 4 Cat C/D visibility to ¾ SM.</div></div>			
AWOS-3 128.475		CHICAGO CENTER 132.5 284.7	UNICOM 123.0 (CTAF) <div><div></div></div>



2300 NoPT  
012° (16.6)

2300 IAF ROBERTS  
116.8 RBS  
Chan 115

Remain within 10 NM

2300 → 218°

2300 → 038°

GS 3.00°  
TCH 51

IK LOM  
IKK 4.2

1842

IKK 0.6

1900

3.6 NM

2300

IK

CATEGORY	A	B	C	D
S-ILS 4	824-½ 200 (200-½)			
S-LOC 4	920-½	296 (300-½)	920-¾	296 (300-¾)
CIRCLING	1080-1 450 (500-1)	1100-1 470 (500-1)	1140-1½ 510 (600-1½)	1340-2¼ 710 (800-2¼)

ELEV 630

TDZE 624

2300 IAF ROBERTS  
116.8 RBS  
Chan 115

2300

IK

Remain within 10 NM

2300 → 218°

2300 → 038°

GS 3.00°  
TCH 51

IK LOM  
IKK 4.2

1842

IKK 0.6

1900

3.6 NM

2300 NoPT  
012° (16.6)

IAF ROBERTS  
116.8 RBS  
Chan 115

Remain within 10 NM

2300 → 218°

2300 → 038°

GS 3.00°  
TCH 51

IK LOM  
IKK 4.2

1842

IKK 0.6

1900

3.6 NM

2300

IK

2300 NoPT  
012° (16.6)

IAF ROBERTS  
116.8 RBS  
Chan 115

Remain within 10 NM

2300 → 218°

2300 → 038°

GS 3.00°  
TCH 51

IK LOM  
IKK 4.2

1842

IKK 0.6

1900

3.6 NM

2300

IK

2300 NoPT  
012° (16.6)

IAF ROBERTS  
116.8 RBS  
Chan 115

Remain within 10 NM

2300 → 218°

2300 → 038°

GS 3.00°  
TCH 51

IK LOM  
IKK 4.2

1842

IKK 0.6

1900

3.6 NM

2300

IK

2300 NoPT  
012° (16.6)

IAF ROBERTS  
116.8 RBS  
Chan 115

Remain within 10 NM

2300 → 218°

2300 → 038°

GS 3.00°  
TCH 51

IK LOM  
IKK 4.2

1842

IKK 0.6

1900

3.6 NM

2300

IK

2300 NoPT  
012° (16.6)

IAF ROBERTS  
116.8 RBS  
Chan 115

Remain within 10 NM

2300 → 218°

2300 → 038°

GS 3.00°  
TCH 51

IK LOM  
IKK 4.2

1842

IKK 0.6

1900

3.6 NM

2300

IK

2300 NoPT  
012° (16.6)

IAF ROBERTS  
116.8 RBS  
Chan 115

Remain within 10 NM

2300 → 218°

2300 → 038°

GS 3.00°  
TCH 51

IK LOM  
IKK 4.2

1842

IKK 0.6

1900

3.6 NM

2300

IK

2300 NoPT  
012° (16.6)

IAF ROBERTS  
116.8 RBS  
Chan 115

Remain within 10 NM

2300 → 218°

2300 → 038°

GS 3.00°  
TCH 51

IK LOM  
IKK 4.2

1842

IKK 0.6

1900

3.6 NM

2300

IK

2300 NoPT  
012° (16.6)

IAF ROBERTS  
116.8 RBS  
Chan 115

Remain within 10 NM

2300 → 218°

2300 → 038°

GS 3.00°  
TCH 51

IK LOM  
IKK 4.2

1842

IKK 0.6

1900

3.6 NM

2300

IK

2300 NoPT  
012° (16.6)

IAF ROBERTS  
116.8 RBS  
Chan 115

Remain within 10 NM

2300 → 218°

2300 → 038°

GS 3.00°  
TCH 51

IK LOM  
IKK 4.2

1842

IKK 0.6

1900

3.6 NM

2300

IK

2300 NoPT  
012° (16.6)

IAF ROBERTS  
116.8 RBS  
Chan 115

Remain within 10 NM

2300 → 218°

2300 → 038°

GS 3.00°  
TCH 51

IK LOM  
IKK 4.2

1842

IKK 0.6

1900

3.6 NM

2300

IK

2300 NoPT  
012° (16.6)

IAF ROBERTS  
116.8 RBS  
Chan 115

Remain within 10 NM

2300 → 218°

2300 → 038°

GS 3.00°  
TCH 51

IK LOM  
IKK 4.2

1842

IKK 0.6

1900

3.6 NM

2300

IK

2300 NoPT  
012° (16.6)

IAF ROBERTS  
116.8 RBS  
Chan 115

Remain within 10 NM

2300 → 218°

2300 → 038°

GS 3.00°  
TCH 51

IK LOM  
IKK 4.2

1842

IKK 0.6

1900

3.6 NM

2300

IK

2300 NoPT  
012° (16.6)

IAF ROBERTS  
116.8 RBS  
Chan 115

Remain within 10 NM

2300 → 218°

2300 → 038°

GS 3.00°  
TCH 51

IK LOM  
IKK 4.2

1842

IKK 0.6

1900

3.6 NM

2300

IK

2300 NoPT  
012° (16.6)

IAF ROBERTS  
116.8 RBS  
Chan 115

Remain within 10 NM

2300 → 218°

2300 → 038°

GS 3.00°  
TCH 51

IK LOM  
IKK 4.2

1842

IKK 0.6

1900

3.6 NM

2300

IK

2300 NoPT  
012° (16.6)

IAF ROBERTS  
116.8 RBS  
Chan 115

Remain within 10 NM

2300 → 218°

2300 → 038°

GS 3.00°  
TCH 51

IK LOM  
IKK 4.2

1842

IKK 0.6

1900

3.6 NM

2300

IK

2300 NoPT  
012° (16.6)

IAF ROBERTS  
116.8 RBS  
Chan 115

Remain within 10 NM

2300 → 218°

2300 → 038°

GS 3.00°  
TCH 51

IK LOM  
IKK 4.2

1842

IKK 0.6

1900

3.6 NM

2300

IK

2300 NoPT  
012° (16.6)

IAF ROBERTS  
116.8 RBS  
Chan 115

Remain within 10 NM

2300 → 218°

2300 → 038°

GS 3.00°  
TCH 51

IK LOM  
IKK 4.2

1842

IKK 0.6

1900

3.6 NM

2300

IK

2300 NoPT  
012° (16.6)

IAF ROBERTS  
116.8 RBS  
Chan 115

Remain within 10 NM

2300 → 218°

2300 → 038°

GS 3.00°  
TCH 51

IK LOM  
IKK 4.2

1842

IKK 0.6

1900

3.6 NM

2300

IK

2300 NoPT  
012° (16.6)

IAF ROBERTS  
116.8 RBS  
Chan 115

Remain within 10 NM

2300 → 218°

2300 → 038°

GS 3.00°  
TCH 51

IK LOM  
IKK 4.2

1842

IKK 0.6

1900

3.6 NM

2300

IK

2300 NoPT  
012° (16.6)

IAF ROBERTS  
116.8 RBS  
Chan 115

Remain within 10 NM

2300 → 218°

2300 → 038°

GS 3.00°  
TCH 51

IK LOM  
IKK 4.2

1842

IKK 0.6

1900

3.6 NM

2300

IK

2300 NoPT  
012° (16.6)

IAF ROBERTS  
116.8 RBS  
Chan 115

Remain within 10 NM

2300 → 218°

2300 → 038°

GS 3.00°  
TCH 51

IK LOM  
IKK 4.2

1842

IKK 0.6

1900

3.6 NM

2300

IK

2300 NoPT  
012° (16.6)

IAF ROBERTS  
116.8 RBS  
Chan 115

Remain within 10 NM

2300 → 218°

2300 → 038°

GS 3.00°  
TCH 51

IK LOM  
IKK 4.2

1842

IKK 0.6

1900

3.6 NM

2300

IK

2300 NoPT  
012° (16.6)

IAF ROBERTS  
116.8 RBS  
Chan 115

Remain within 10 NM

2300 → 218°

2300 → 038°

GS 3.00°  
TCH 51

IK LOM  
IKK 4.2

1842

IKK 0.6

1900

3.6 NM

2300

IK

2300 NoPT  
012° (16.6)

IAF ROBERTS  
116.8 RBS  
Chan 115

Remain within 10 NM

2300 → 218°

2300 → 038°

GS 3.00°  
TCH 51

IK LOM  
IKK 4.2

1842

IKK 0.6

1900

3.6 NM

2300

IK

2300 NoPT  
012° (16.6)

IAF ROBERTS  
116.8 RBS  
Chan 115

Remain within 10 NM

2300 → 218°

2300 → 038°

GS 3.00°  
TCH 51

IK LOM  
IKK 4.2

1842

IKK 0.6

1900

3.6 NM

2300

IK

2300 NoPT  
012° (16.6)

IAF ROBERTS  
116.8 RBS  
Chan 115

Remain within 10 NM

2300 → 218°

2300 → 038°

GS 3.00°  
TCH 51

IK LOM  
IKK 4.2

1842

IKK 0.6

1900

3.6 NM

2300

IK

2300 NoPT  
012° (16.6)

IAF ROBERTS  
116.8 RBS  
Chan 115

Remain within 10 NM

2300 → 218°

2300 → 038°

GS 3.00°  
TCH 51

IK LOM  
IKK 4.2

1842

IKK 0.6

1900

3.6 NM

2300

IK

2300 NoPT  
012° (16.6)

IAF ROBERTS  
116.8 RBS  
Chan 115

Remain within 10 NM

2300 → 218°

2300 → 038°

GS 3.00°  
TCH 51

IK LOM  
IKK 4.2

1842

IKK 0.6

1900

3.6 NM

2300

IK

2300 NoPT  
012° (16.6)