

WAAS CH 42740 W32A	APP CRS 319°	Rwy Idg 4599 TDZE 821 Apt Elev 826
--	------------------------	---

RNAV (GPS) RWY 32
CLINTONVILLE MUNI (CLI)

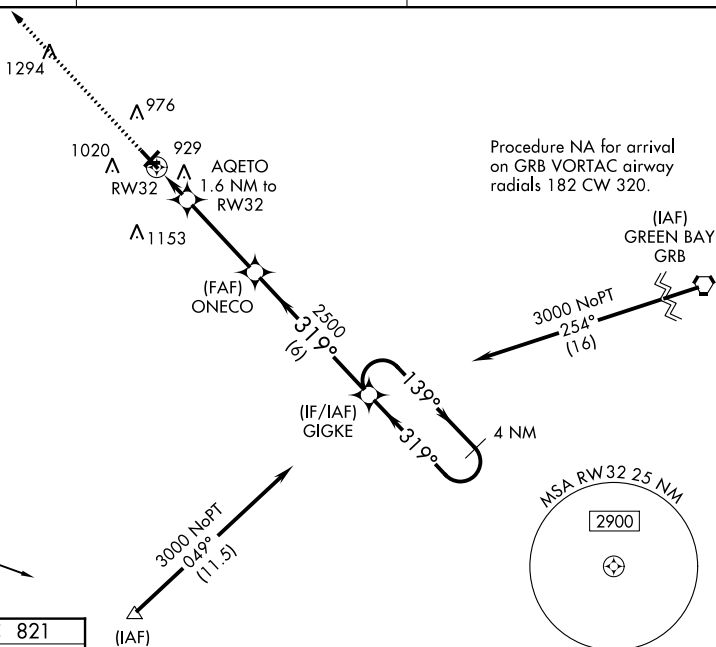
RNP APCH.

T For uncompensated Baro-VNAV systems, LNAV/VNAV NA below -16°C or above 54°C. Rwy 32 helicopter visibility reduction below 3/4 SM NA. Circling Rwy 14 NA at night. Circling NA to Rwy 9 and 27.

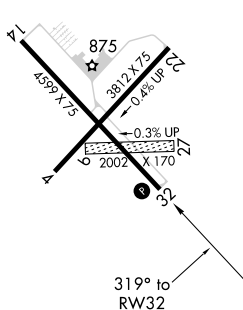
MISSED APPROACH:
Climb to 3000 direct
ICSI and hold.

AWOS-3 120.675	GREEN BAY APP CON ★ 126.3 338.2	UNICOM 122.8 (CTAF) 0
--------------------------	---	--

MISSED APCH FIX



ELEV 826		TDZE 821
----------	--	----------

REIL Rwy 32 **L**

MIRL Rwy 4-22 and 14-32 L

3000
↑
LNAV only

ICOSI

VGS1 and RNAV glidepath not coincident
(VGS1 Angle 3.00/TCH 26).

4 NM
Holding Pattern

GIGKE

139° →
← 319°

3000

GP 3.00°
TCH 45

ONECO
2500

2500

319°

1.6 NM to
RW32

1.1 NM to
RW32

RW32

*1360

	1.1	0.5	3.6 NM	6 NM	
CATEGORY	A		B	C	D
LPV DA	1071-7 $\frac{7}{8}$	250 (300-7 $\frac{7}{8}$)		NA	
RNAV/ VNAV DA	1209-1 $\frac{1}{8}$	388 (400-1 $\frac{1}{8}$)		NA	
RNAV MDA	1180-1	359 (400-1)		NA	
CIRCLING	1340-1	514 (600-1)		NA	