

WAAS

CH **63033**

W17A

APP CRS

169°

Rwy Idg

3398

TDZE

455

Apt Elev

461

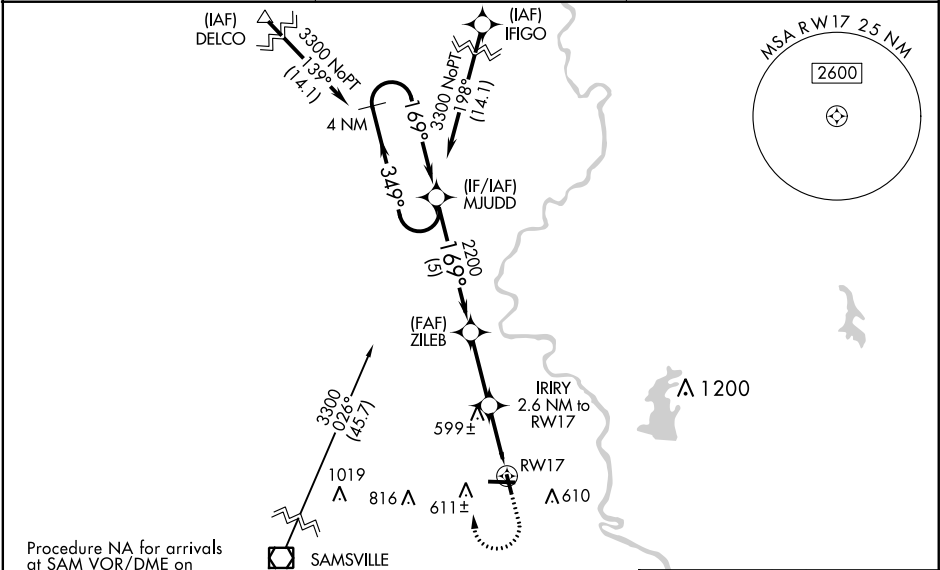
RNAV (GPS) RWY 17

CRAWFORD CO (RSV)

▼ Baro-VNAV NA when using Terre Haute Rgnl altimeter setting. For uncompensated Baro-VNAV systems, LNAV/VNAV NA below -15°C (5°F) or above 54°C (130°F). DME/DME RNP-0.3 NA. When local altimeter setting not received, use Terre Haute Rgnl altimeter setting and increase all DA 89 feet and all MDA 100 feet; increase LPV all Cats visibility ¼ mile, increase LNAV/VNAV all Cats visibility ⅓ mile, increase LNAV Cat C visibility ¼ mile and increase Circling Cat C visibility ½ mile. Rwy 17 Straight-in and Circling minimums NA at night. Helicopter visibility reduction below 1 SM NA.

MISSED APPROACH: Climb to 3300 then climbing right turn to 3300 direct MJUDD and hold.

AWOS-3 120.50	HULMAN APP CON 119.25 339.8	UNICOM 123.0 (CTAF) 0
-------------------------	---------------------------------------	---------------------------------



ELEV 461

TDZE 455

4 NM Holding Pattern

MJUDD

3300 ← 349°

169° →

GP 3.00° TCH 51

2200

1320

5 NM

2.7 NM

2.6 NM

ZILEB 2200

IRIRY 2.6 NM to RWY 17

RWY 17

*LNAV only.

1300

3300

MJUDD

169° to RWY 17

5108 X 100

3398 X 75

35

REIL Rwy 17, 9 and 27 0

MIRL Rwy 9-27 and 17-35 0

CATEGORY	A	B	C	D
LPV DA	734-1	279 (300-1)		NA
LNAV/VNAV DA	812-1½	357 (400-1½)		NA
LNAV MDA	860-1	405 (400-1)	860-1½ 405 (400-1½)	NA
CIRCLING	940-1 479 (500-1)	1080-1 619 (700-1)	1120-1¾ 659 (700-1¾)	NA