

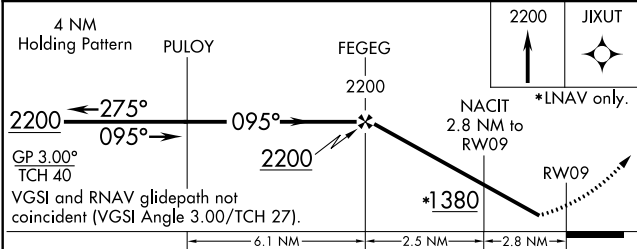
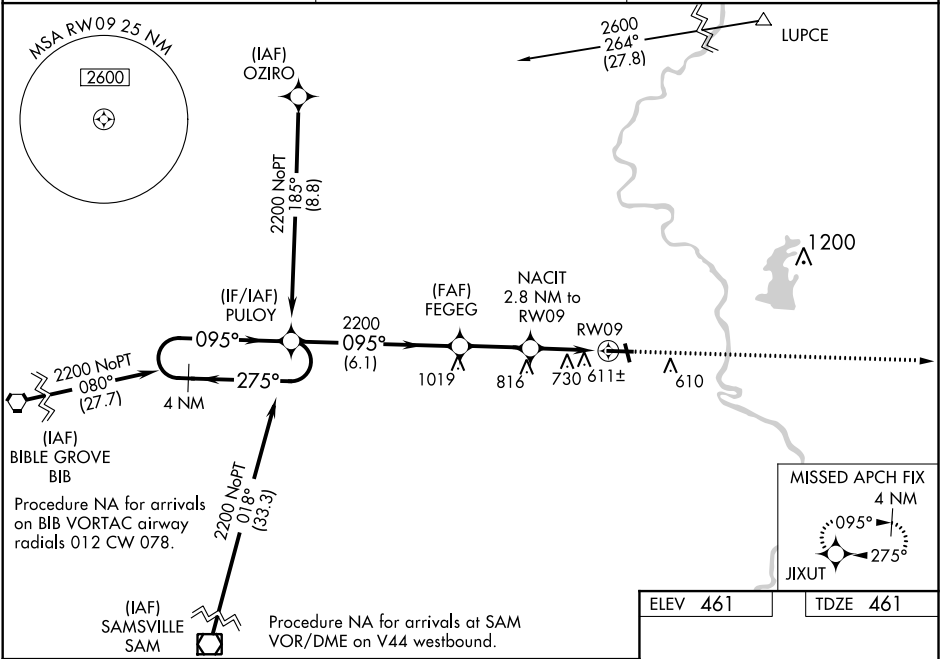
WAAS CH <b>49109</b> <b>W09A</b>	APP CRS <b>095°</b>	Rwy Idg <b>5108</b> TDZE <b>461</b> Apt Elev <b>461</b>
--	------------------------	---

RNAV (GPS) RWY 9  
CRAWFORD CO (RSV)

**⚠** Baro-VNAV NA when using Terre Haute Rgnl altimeter setting. For uncompensated Baro-VNAV systems, LNAV/VNAV NA below -15°C (5°F) or above 54°C (130°F). DME/DME RNP-0.3 NA. When local altimeter setting not received, use Terre Haute Rgnl altimeter setting and increase all DA 89 feet and all MDA 100 feet; increase LPV all Cats visibility ¼ mile, increase LNAV Cats C/D visibility ¼ mile and Circling Cats C/D ½ mile. Helicopter visibility reduction below 1 SM NA. Rwy 9 Straight-in minimums NA at night.

MISSED APPROACH:  
Climb to 2200 direct JIXUT and hold.

AWOS-3 <b>120.50</b>	HULMAN APP CON <b>119.25 339.8</b>	UNICOM <b>123.0 (CTAF) 0</b>
-------------------------	---------------------------------------	---------------------------------



CATEGORY	A	B	C	D
LPV DA	805-1½ 344 (400-1½)			
LNAV/VNAV DA	1103-2½ 642 (700-2½)			
LNAV MDA	1040-1 579 (600-1)	1040-1½ 579 (600-1½)		
CIRCLING	1040-1 579 (600-1)	1080-1 619 (700-1)	1120-1¾ 659 (700-1¾)	1180-2¼ 719 (800-2¼)

ELEV 461 TDZE 461

REIL Rwy 17, 9 and 27 0  
MRL Rwy 9-27 and 17-35 0

The diagram shows the intersection of Runway 9 and Runway 17. Key features include:

- 5108 X 100**: Obstacle MSL and bearing.
- 3598 X 75**: Obstacle MSL and bearing.
- 35**: Obstacle MSL.

EC-3, 03 DEC 2020 to 31 DEC 2020

EC-3, 03 DEC 2020 to 31 DEC 2020