

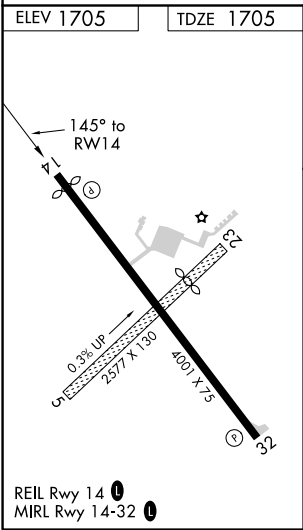
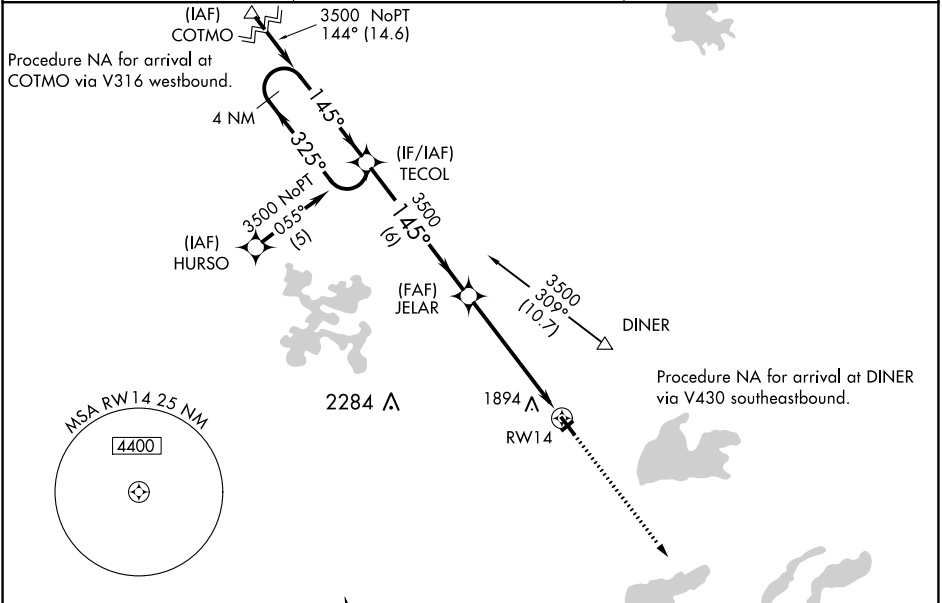
APP CRS	Rwy Idg	3802 (day)
145°	TDZE	3601 (night)
	Apt Elev	1705

RNAV (GPS) RWY 14
KINGS LAND O'LAKES (LNL)

If local altimeter setting not received, use Eagle River Union altimeter setting and increase all MDAs 40 feet. Helicopter visibility reduction below 1 SM NA. Circling Rwy 32 NA at night. Circling NA to Rwys 5 and 23. DME/DME RNP- 0.3 NA.

MISSED APPROACH: Climb to 3500 direct TOLOY and hold.

AWOS-3 119.525	MINNEAPOLIS CENTER 133.65 281.5	UNICOM 122.8 (CTAF) 0
-------------------	------------------------------------	--------------------------



ELEV 1705	TDZE 1705
Procedure NA for arrival at JAYME via V63 southwestbound.	
4 NM Holding Pattern	VGSI and descent angles not coincident (VGSI Angle 4.00/TCH 35).
TECOL JELAR	
3500 325° 145° 3500 145° 3500 3.00° TCH 35 RWY 14	
6 NM 5.5 NM	
CATEGORY	A B C D
LNAV MDA	2220-1 515 (600-1) 2220-1½ 515 (600-1½) NA
CIRCLING	2220-1 515 (600-1) 2240-1 535 (600-1) 2240-1½ 535 (600-1½) NA

EC-3, 03 DEC 2020 to 31 DEC 2020

EC-3, 03 DEC 2020 to 31 DEC 2020