

WAAS CH <b>70521</b> <b>W30A</b>	APP CRS <b>302°</b>	Rwy Idg <b>7002</b> TDZE <b>411</b> Apt Elev <b>413</b>
--	------------------------	---

RNAV (GPS) RWY 30L

ST LOUIS DOWNTOWN (CPS)

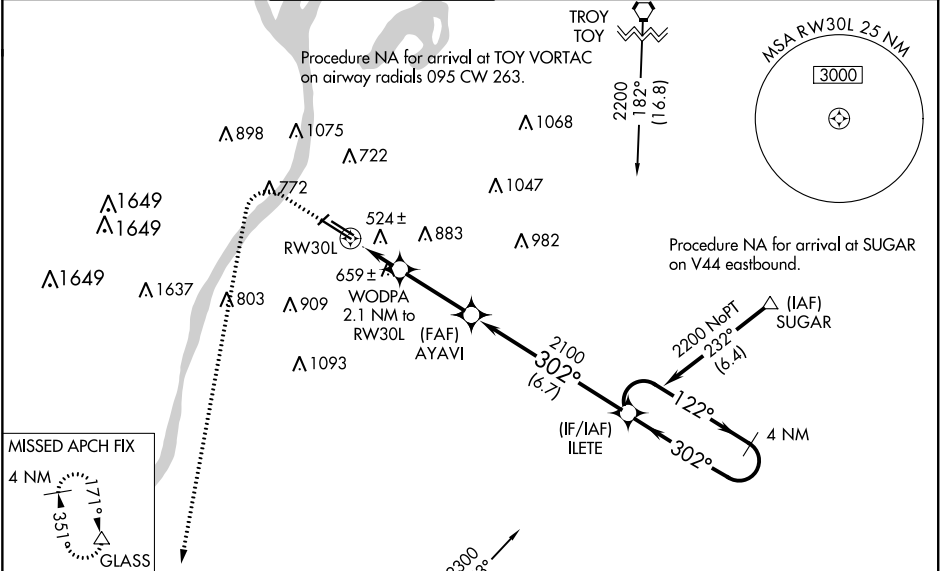
**⚠** DME/DME RNP-0.3 NA. When local altimeter setting not received, use St Louis Lambert Intl altimeter setting and increase all DA 63 feet and all MDA 80 feet; increase LNAV/VNAV all Cats visibility ¼ mile, LNAV Cat C and D visibility ⅓ mile, Circling Cat C visibility ¼ mile and Circling Cat D visibility ½ mile. VDP and Baro-VNAV NA with St Louis Lambert Intl altimeter setting. For uncompensated Baro-VNAV systems, LNAV/VNAV NA below -15°C (5°F) or above 41°C (105°F). When using St Louis Lambert Intl altimeter setting; for inop MALSRL, increase LPV all Cats visibility to ⅓ mile and LNAV Cats C/D visibility to 1 ⅓ mile. Night landing: Rwy 5 NA.

**MALSRL**

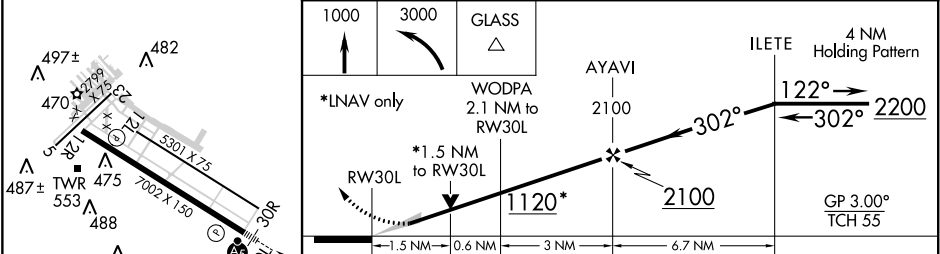
**AS**

**MISSED APPROACH:**  
Climb to 1000 then climbing left turn to 3000 direct GLASS and hold.

ATIS <b>121.45</b>	ST LOUIS APP CON <b>123.7 371.875</b>	DOWNTOWN TOWER ★ <b>119.925 (CTAF) 0 379.3</b>	GND CON <b>121.8</b>	CLNC DEL <b>118.275</b>	CLNC DEL <b>121.8</b> (when twr closed)	UNICOM <b>122.95</b>
-----------------------	--	---	-------------------------	----------------------------	---	-------------------------



ELEV <b>413</b>	<b>D</b>	TDZE <b>411</b>
-----------------	----------	-----------------



CATEGORY	A	B	C	D
LPV DA		611-½	200 (200-½)	
LNAV/VNAV DA		827-⅞	416 (500-⅞)	
LNAV MDA	940-½	529 (600-½)	940-1	529 (600-1)
CIRCLING	940-1	527 (600-1)	1000-1½ 587 (600-1½)	1080-2 667 (700-2)