

WAAS CH <b>58010</b> <b>W23A</b>	APP CRS <b>231°</b>	Rwy Idg <b>5572</b> TDZE <b>471</b> Apt Elev <b>480</b>
--	------------------------	---

# RNAV (GPS) RWY 23

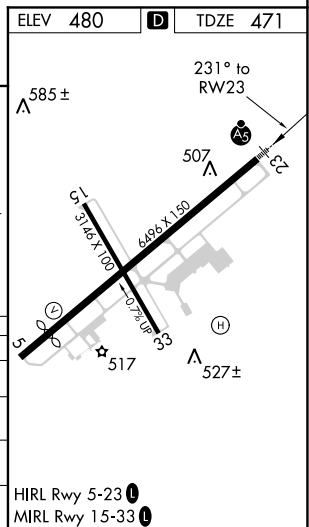
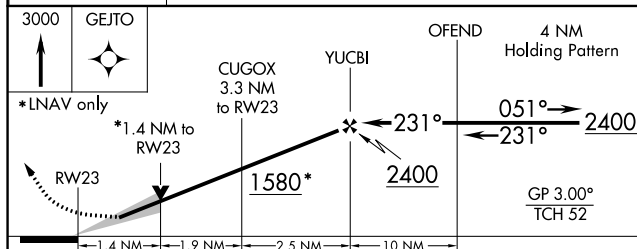
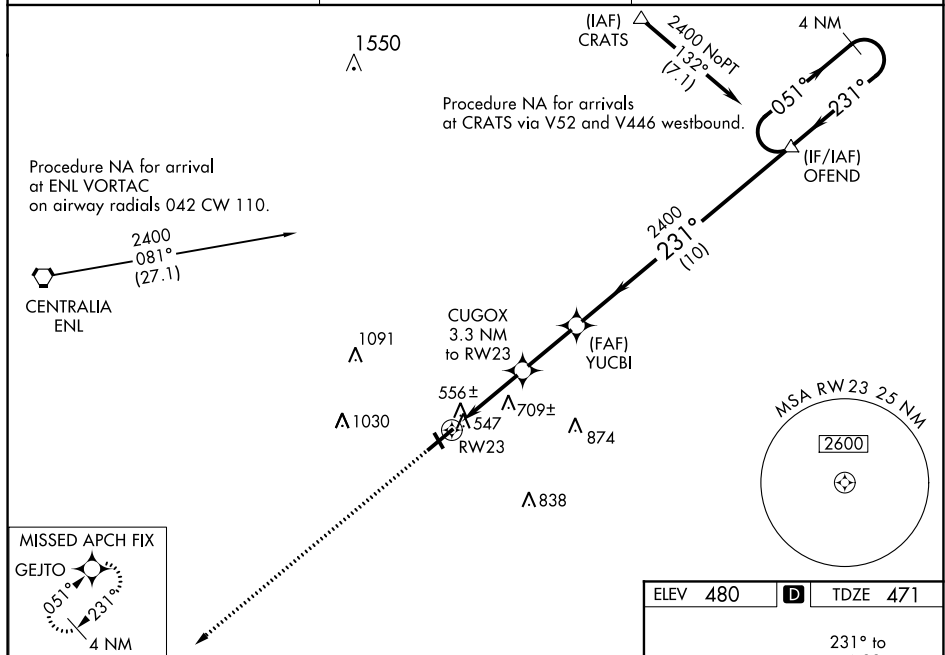
**⚠** For uncompensated Baro-VNAV systems, LNAV/VNAV NA below -15° C (5°F) or above 48° C (118°F). DME/DME RNP-0.3 NA. When local altimeter setting not received, use Centralia altimeter setting and increase all DA 45 feet and all MDA 60 feet, and increase LNAV Cat C/D and Circling Cat D visibility ¼ mile. For inop MALSRL, when using Centralia altimeter setting, increase LPV all Cats visibility to 1 mile. VDP and Baro-VNAV NA when using Centralia altimeter setting. Circling to Rwy 15/33 NA at night.

MALSR



**MISSED APPROACH:**  
Climb to 3000 direct  
GEJTO and hold.

AWOS-3PT <b>118.2</b>	KANSAS CITY CENTER <b>127.7 351.825</b>	UNICOM <b>123.0 (CTAF) 0</b>
--------------------------	--	---------------------------------



CATEGORY	A	B	C	D
LPV DA	721-1/2 250 (300-1/2)			
LNAV/VNAV	873-1 402 (400-1)			
LNAV MDA	960-1/2	489 (500-1/2)	960-3/4 489 (500-3/4)	960-1 489 (500-1)
CIRCLING	1000-1	520 (600-1)	1000-1 1/2 520 (600-1 1/2)	1140-2 660 (700-2)