

WAAS CH 78232 W19A	APP CRS 190°	Rwy Idg TDZE Apt Elev	5010 979 979
--	------------------------	-----------------------------	---

RNAV (GPS) RWY 19

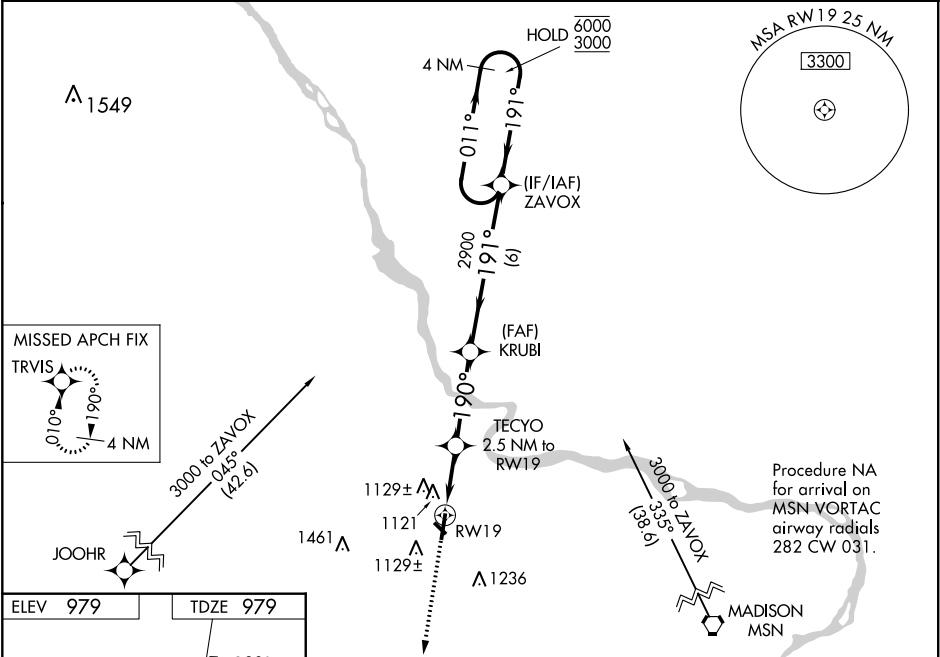
BARABOO-WISCONSIN DELLS RGNL (DLL)

RNP APCH.

Circling NA to Rwy 14 and 32.
Rwy 19 helicopter visibility reduction below ¾ SM NA.
For uncompensated Baro-VNAV systems, LNAV/VNAV NA below -16°C or above 54°C.

MISSED APPROACH:
Climb to 3000 direct
TRVIS and hold.

AWOS-3 118.325	MADISON APP CON ★ 135.45 343.7	UNICOM 123.05 (CTAF) 0
--------------------------	--	----------------------------------



ELEV 979	TDZE 979	VGSi and RNAV glidepath not coincident (VGSi Angle 3.00/TCH 32)			
<div><div></div><div>190° to RWY 19</div><div>61</div><div>5010 X 100</div><div>2746 X 100</div><div>32</div><div>1</div><div>MIRL Rwy 1-19 0</div><div>REIL Rwy 1 and 19 0</div></div>		3000 TRVIS	TECYO 2.5 NM to RWY 19	KRUBI 2900	ZAVOX 4 NM Holding Pattern
		* LNAV only.	* 1.3 NM to RWY 19	* 1800	GP 3.00° TCH 53
		→ 1.3 NM	→ 1.2 NM	→ 3.4 NM	→ 6 NM
CATEGORY		A	B	C	D
LPV DA		1341-1	362 (400-1)		NA
LNAV/VNAV DA		1302-1	323 (400-1)		NA
LNAV MDA		1420-1	441 (500-1)	1420-1 3/8 441 (500-1 3/8)	NA
CIRCLING		1520-1	541 (600-1)	1580-1 3/4 601 (700-1 3/4)	NA