

| | | |
|--|------------------------|---|
| WAAS CH 78032 W18A | APP CRS 181° | Rwy Idg 4098 TDZE 573 Apt Elev 573 |
|--|------------------------|---|

RNAV (GPS) RWY 18

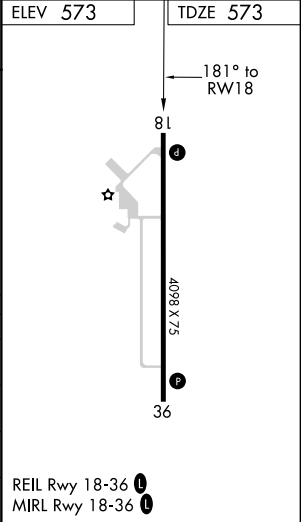
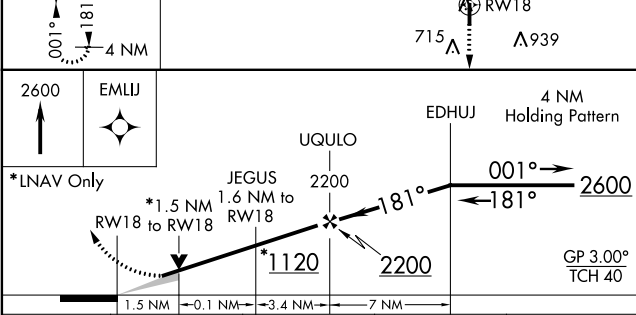
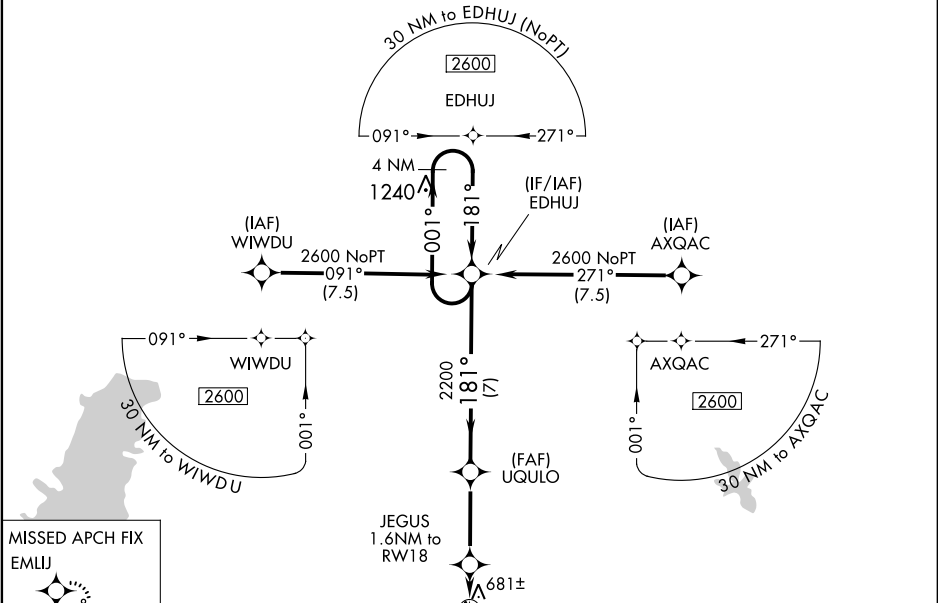
SALEM-LECKRONE (SLO)

⚠

Baro-VNAV NA when using Centralia altimeter setting. For uncompensated Baro-VNAV systems, LNAV/VNAV NA below -21°C (-5°F) or above 54°C (130°F). When local altimeter setting not received, use Centralia altimeter setting and increase all DA 28 feet and all MDA 40 feet; increase LNAV/VNAV all Cats visibility ½ mile, LNAV Cats C/D visibility ½ mile, Circling Cat D visibility ¼ mile. DME/DME RNP-0.3 NA.

MISSED APPROACH:
Climb to 2600 direct EMLIJ and hold.

| | | |
|--------------------------|--|---------------------------------|
| AWOS-3 118.525 | KANSAS CITY CENTER 127.7 351.825 | UNICOM 122.8 (CTAF) 0 |
|--------------------------|--|---------------------------------|



| CATEGORY | A | B | C | D |
|---------------|--------|-------------|-------------------------|-----------------------|
| LPV DA | | 773-1 | 200 (200-1) | |
| LNAV/ VNAV DA | | 862-1 | 289 (300-1) | |
| LNAV MDA | | 940-1 | 367 (400-1) | |
| CIRCLING | 1040-1 | 467 (500-1) | 1040-1½ 467 (500-1½) | 1240-2 667 (700-2) |