

WAAS  
CH **99501**  
**W16A**

APP CRS  
**159°**

Rwy Idg  
TDZE **1278**  
Apt Elev **1278**

**RNAV (GPS) RWY 16**

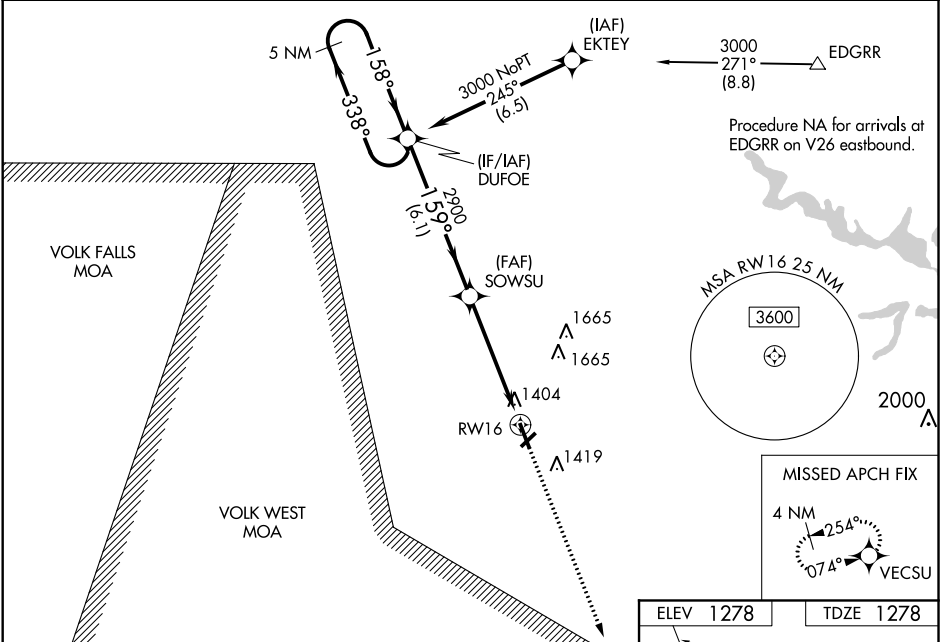
MARSHFIELD MUNI (MFI)

⚠

For uncompensated Baro-VNAV systems, LNAV/VNAV NA below -21°C (-5°F) or above 54°C (130°F). Baro-VNAV and VDP NA when using Central Wisconsin altimeter setting. DME/DME RNP-0.3 NA. Rwy 16 helicopter visibility reduction below ¾ SM NA. When local altimeter setting not received, use Central Wisconsin altimeter setting and increase all DA 56 feet and all visibility ⅓ SM, increase all MDA 60 feet and LNAV Cat C/D visibility ¼ SM.

MISSED APPROACH:  
Climb to 3000 direct  
VECSU and hold.

ASOS <b>121.575</b>	MINNEAPOLIS CENTER <b>124.4 317.7</b>	UNICOM <b>123.0 (CTAF) 0</b>
------------------------	------------------------------------------	---------------------------------



5 NM Holding Pattern				
VGSI and RNAV glidepath not coincident (VGSI Angle 3.00/TCH 35).				
DUFOE				
SOWSU				
* LNAV only.				
* 1.4 NM to RWY 16				
RWY 16				
6.1 NM 3.6 NM 1.4 NM				
CATEGORY	A	B	C	D
LPV DA	1639-1¼		361 (400-1¼)	
LNAV/VNAV DA	1682-1⅔		404 (500-1⅔)	
LNAV MDA	1760-1	482 (500-1)	1760-1⅓	482 (500-1⅓)
CIRCLING	1760-1	482 (500-1)	2020-2¼ 742 (800-2¼)	2020-2½ 742 (800-2½)

