

WAAS CH 90307 W20A	APP CRS 203°	Rwy Idg TDZE Apt Elev	5197 827 827
--	------------------------	-----------------------------	---

RNAV (GPS) RWY 20

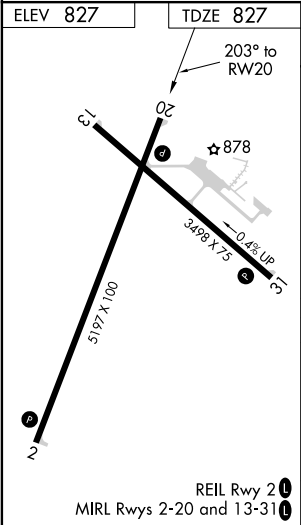
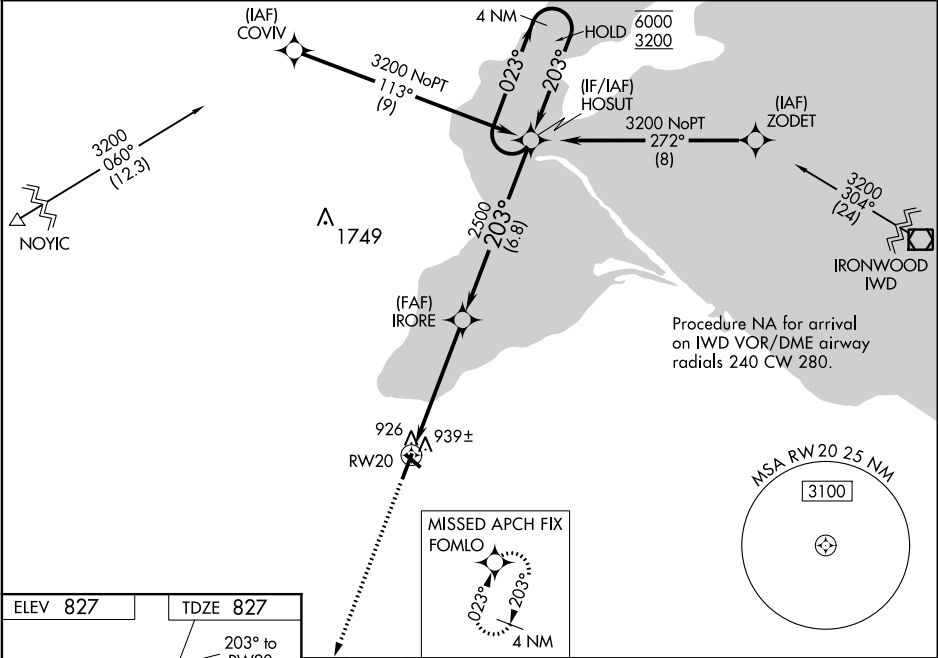
JOHN F KENNEDY MEMORIAL (ASX)

RNP APCH.

Baro-VNAV and VDP NA when using Ironwood altimeter setting. Rwy 20 helicopter visibility reduction below ¾ SM NA. For uncompensated Baro-VNAV systems, LNAV/VNAV NA below -22°C or above 54°C. When local altimeter setting not received, use Ironwood altimeter setting: increase LPV DA to 1260 feet and all visibilities ½ SM; increase LNAV/VNAV DA to 1256 feet and all visibilities ½ SM; increase all MDA 140 feet and LNAV visibility Cat C/D ¾ SM and Circling visibility Cat C/D ½ SM.

MISSED APPROACH:
Climb to 3600 direct FOMLO and hold.

ASOS 126.775	MINNEAPOLIS CENTER 126.45 276.4	GCO 122.25	UNICOM 122.8 (CTAF)
------------------------	---	----------------------	-------------------------------



4 NM Holding Pattern				
HOSUT				
*LNAV only				
*1.1 NM to RWY20				
RWY20				
1.1 NM 4.1 NM 6.8 NM				
CATEGORY				
A B C D				
LPV DA				
1128-1 301 (400-1)				
LNAV/VNAV DA				
1124-1 297 (300-1)				
LNAV MDA				
1200-1 373 (400-1)				
CIRCLING				
1240-1 1280-1 1440-1¾ 1560-2¼				
413 (500-1) 453 (500-1) 613 (700-1¾) 733 (800-2¼)				