

LOC/DME I-SQI
111.5
Chan **52**

APP CRS
252°

Rwy Idg
TDZE
Apt Elev
6499
647
648

WHITESIDE COUNTY ILS or LOC RWY 25
AIRPORT-JOSEPH H BITTORF FIELD (SQI)

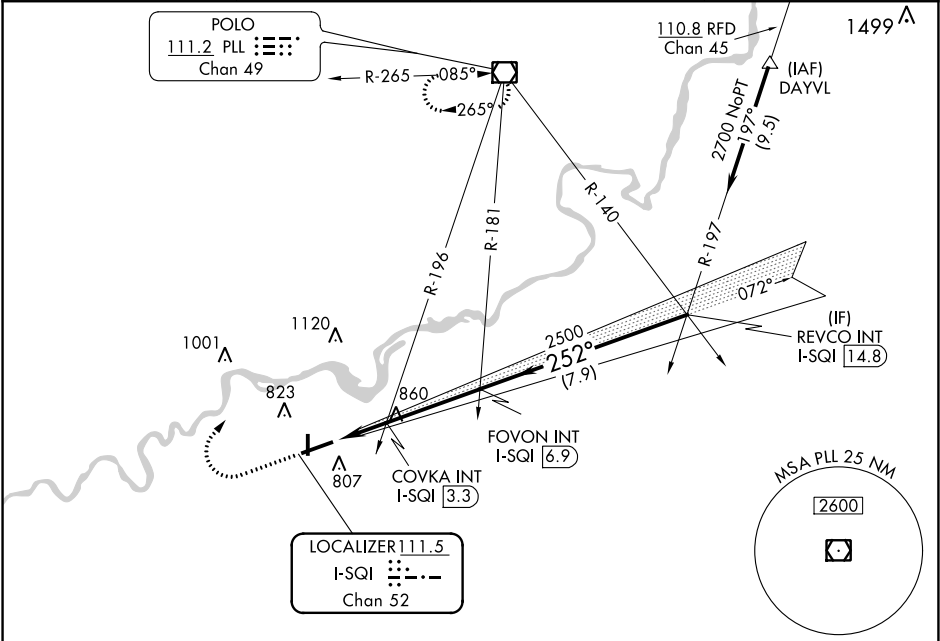
NA

Circling Rwy 36 NA at night.

MALSR

MISSED APPROACH: Climb to 2000 then climbing right turn to 2700 direct PLL VOR/DME and hold.

AWOS-3PT 119.175	ROCKFORD APP CON 126.0 327.0	CLNC DEL 128.0	UNICOM 123.0 (CTAF) 0
----------------------------	--	--------------------------	---------------------------------



ELEV **648**

TDZE **647**

HIRL Rwy 7-25

MIRL Rwy 18-36

REIL Rwys 7, 18 and 36

FAF to MAP 5.7 NM

Knots	60	90	120	150	180
Min:Sec	5:42	3:48	2:51	2:17	1:54

2000	2700	PLL	FOVON INT I-SQI [6.9]	REVCO INT I-SQI [14.8]
*LOC only.				
I-SQI [1.2] I-SQI [2.6] 2500 252° 2700				
1.3 NM 0.8 NM 3.6 NM 7.9 NM				
CATEGORY	A	B	C	D
S-ILS 25	847-1/2 200 (200-1/2)			
S-LOC 25	1320-1/2 673 (700-1/2)		1320-1/2 673 (700-1/2)	
CIRCLING	1320-1 672 (700-1)		1320-2 672 (700-2)	1480-2 3/4 832 (900-2 3/4)
COVKA FIX MINIMUMS (DUAL VOR RECEIVERS OR DME REQUIRED)				
S-LOC 25	1120-1/2 473 (500-1/2)		1120-1 473 (500-1)	
CIRCLING	1140-1 492 (500-1)		1160-1/2 512 (600-1/2)	1480-2 3/4 832 (900-2 3/4)