

LOC/DME I-SQI
111.5
Chan **52**

APP CRS
072°

Rwy ldg
TDZE **648**
Apt Elev **648**

WHITESIDE COUNTY AIRPORT-
JOSEPH H BITTORF FIELD (SQI)

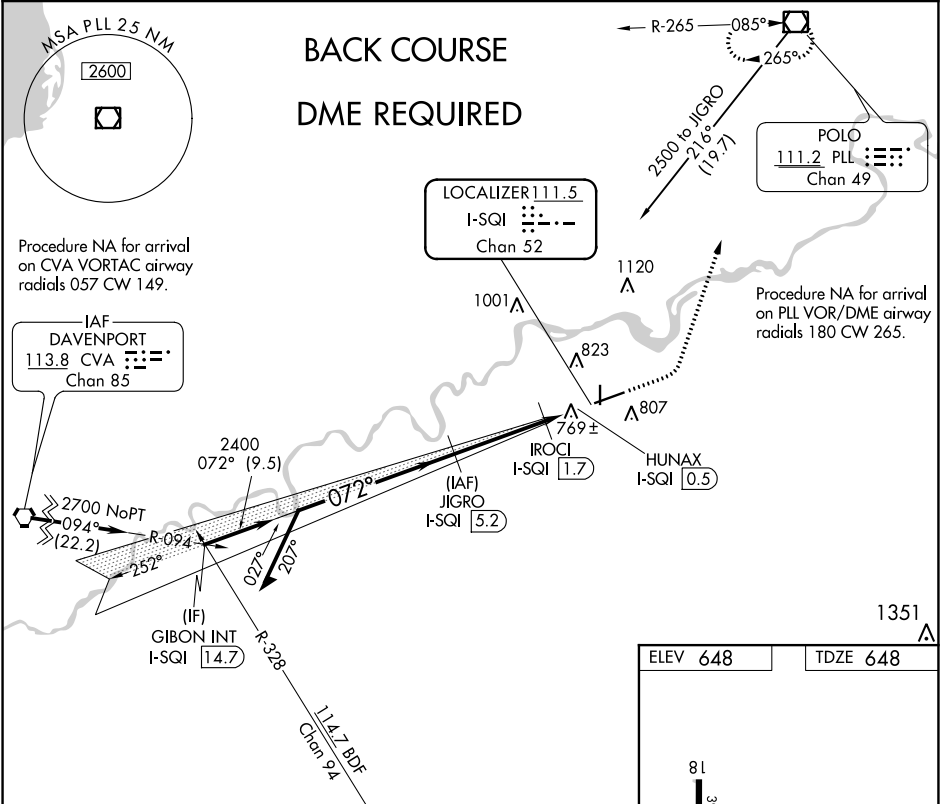
LOC BC RWY 7

NA

Circling Rwy 36 NA at night.
Rwy 7 helicopter visibility reduction below ¾ SM NA.
DME required.

MISSED APPROACH: Climb to 1500
then climbing left turn to 2700 direct
PLL VOR/DME and hold.

AWOS-3PT 119.175	ROCKFORD APP CON 126.0 327.0	CLNC DEL 128.0	UNICOM 123.0 (CTAF) 0
----------------------------	--	--------------------------	---------------------------------



Remain within 10 NM

Disregard glide slope indications.

3.00° TCH 49

3.5 NM 1.2 NM 0.5 0.2

CATEGORY	A	B	C	D
S-LOC 7	1020-1 372 (400-1)			
CIRCLING	1140-1 492 (500-1)		1160-1½ 512 (600-1½)	1480-2¾ 832 (900-2¾)

ELEV 648 TDZE 648

81 3900 X 100

701 36 6499 X 150

072° 5.4 NM from FAF

MIRL Rwy 18-36 0
HIRL Rwy 7-25 0
REIL Rwys 7, 18 and 36 0

FAF to MAP 5.4 NM

Knots	60	90	120	150	180
Min:Sec	5:24	3:36	2:42	2:10	1:48