

APP CRS	Rwy Idg	6499
072°	TDZE	648
	Apt Elev	648

RNAV (GPS) RWY 7

WHITESIDE COUNTY AIRPORT-JOSEPH H BITTORF FIELD (SQI)

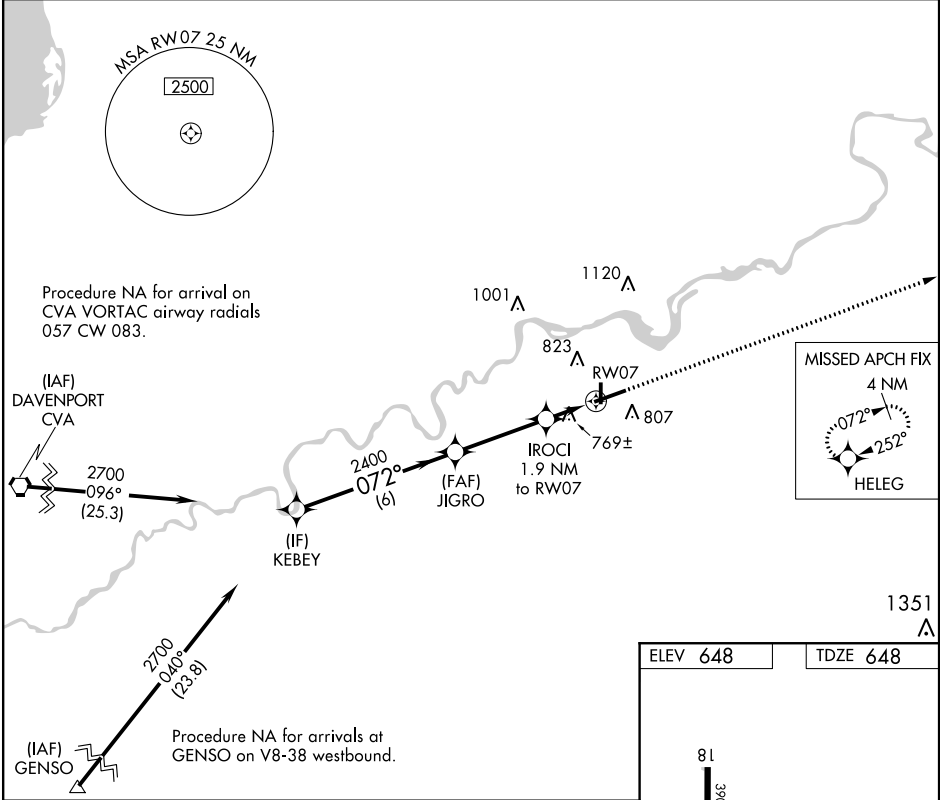
⚠

⚠

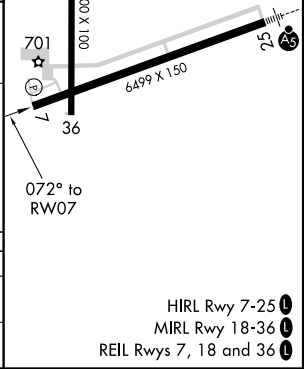
Circling Rwy 36 NA at night.
Rwy 7 helicopter visibility reduction below $\frac{3}{4}$ SM NA.
DME/DME RNP-0.3 NA.

MISSED APPROACH: Climb to 2700 direct HELEG and hold.

AWOS-3PT 119.175	ROCKFORD APP CON 126.0 327.0	CLNC DEL 128.0	UNICOM 123.0 (CTAF) 0
---------------------	---------------------------------	-------------------	--------------------------



KEBEY	2700	072°	JIGRO	2400	3.00° TCH 49	IROCI 1.9 NM to RW07	1 NM to RW07	RW07
2700		2400		1300				
6 NM		3.5 NM		0.9 NM		1 NM		
CATEGORY	A	B	C	D				
LNNAV MDA	1020-1 372 (400-1)							
CIRCLING	1140-1 492 (500-1)		1160-1½ 512 (600-1½)		1480-2¾ 832 (900-2¾)			



EC-3, 03 DEC 2020 to 31 DEC 2020

EC-3, 03 DEC 2020 to 31 DEC 2020