

WAAS

CH 81904

W02A

APP CRS

016°

Rwy Idg

4599

TDZE

724

Apt Elev

724

RNAV (GPS) RWY 2

DOOR COUNTY CHERRYLAND (SUE)

RNP APCH.

▼

▲

Rwy 2 helicopter visibility reduction below ¾ SM NA. For uncompensated Baro-VNAV systems, LNAV/VNAV NA below -16°C or above 54°C.

MISSED APPROACH:

Climb to 2600 direct VOBUY and hold.

AWOS-3PT

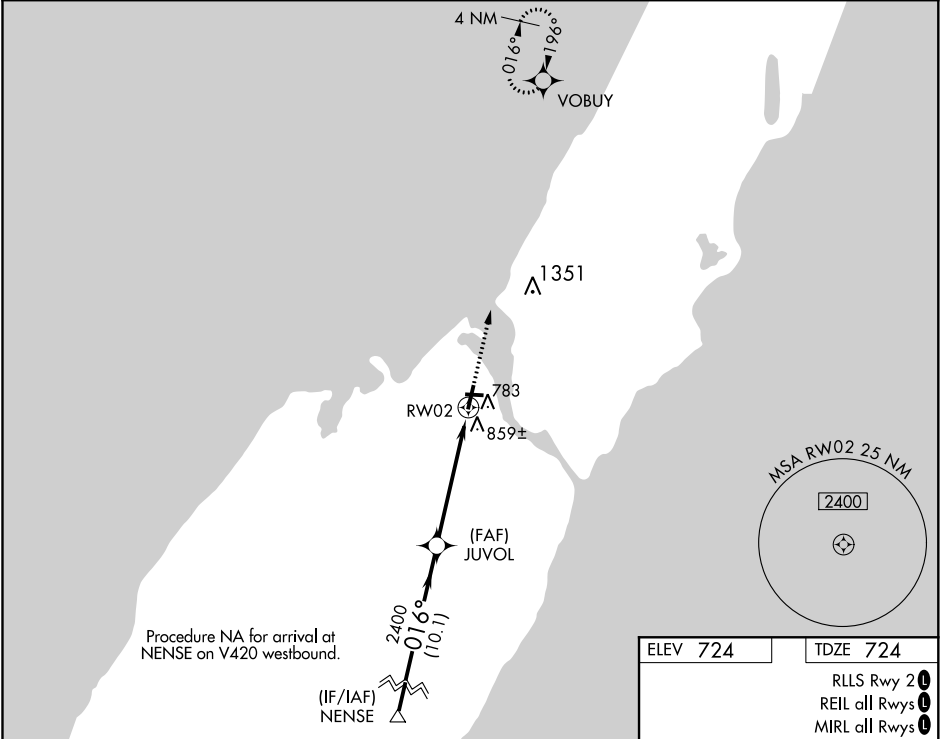
128.325

GREEN BAY APP CON ★

119.25 338.2

UNICOM

122.7(CTAF)0



ELEV 724

TDZE 724

RLLS Rwy 2

REIL all Rwys

MIRL all Rwys

3199 X 75

4599 X 75

016° to RWY 2

NENSE				
VGSI and RNAV glidepath angles not coincident (VGSI Angle 3.00/TCH 34).				
GP 3.00° TCH 40				
10.1 NM				
4 NM				
1.1 NM				
CATEGORY	A	B	C	D
LPV DA	1013-1	289 (300-1)		
LNAV/ VNAV DA	1164-1½	440 (500-1½)		
LNAV MDA	1120-1	396 (400-1)	1120-1⅛	396 (400-1⅛)
CIRCLING	1280-1	556 (600-1)	1280-1½	1280-2
			556 (600-½)	556 (600-2)