

WAAS CH 86304 W20A	APP CRS 196°	Rwy Idg TDZE 724 Apt Elev 724	4599 724
--	------------------------	---	---------------------------

RNAV (GPS) RWY 20

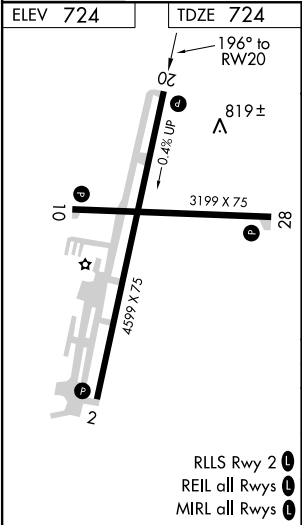
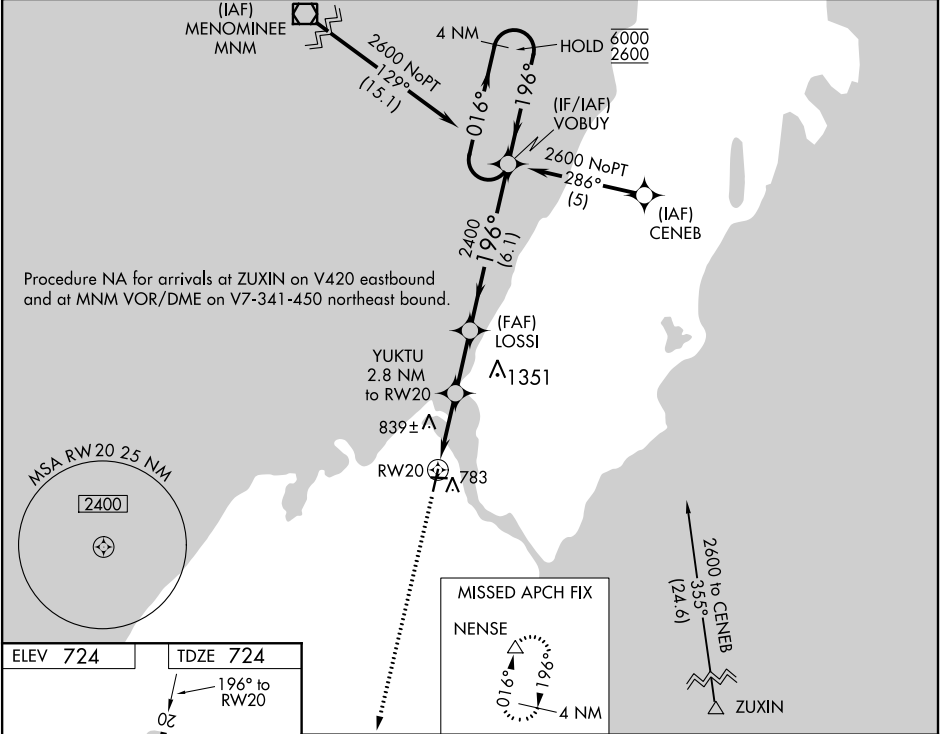
DOOR COUNTY CHERRYLAND (SUE')

RNP APCH.

For uncompensated Baro-VNAV systems, LNAV/VNAV NA below -16°C or above 54°C.

MISSED APPROACH:
Climb to 3500 direct
NENSE and hold.

AWOS-3PT 128.325	GREEN BAY APP CON ★ 119.25 338.2	UNICOM 122.7 (CTAF) 0
----------------------------	--	---------------------------------



3500	NENSE	4 NM Holding Pattern			
↑	△				
*LNAV only		YUKTU 2.8 NM to RW20	LOSSI 2400	VOBUY	016° → 6000 ← 196° 2600
		1.2 NM to RW20	1640	2400	GP 3.00° TCH 46
		RW20			
		1.2 NM	1.6 NM	2.3 NM	6.1 NM
CATEGORY	A	B	C	D	
LPV DA	974-7/8		250 (300-7/8)		
LNAV/ DA VNAV	1069-1¼		345 (400-1¼)		
LNAV MDA	1120-1	396 (400-1)	1120-1½	396 (400-1½)	
CIRCLING	1280-1	556 (600-1)	1280-1½ 556 (600-1½)	1280-2 556 (600-2)	

EC-3, 03 DEC 2020 to 31 DEC 2020

EC-3, 03 DEC 2020 to 31 DEC 2020