

LOC/DME I-HTY	APP CRS	Rwy ldg	5002
108.5	205°	TDZE	1216
Chan 22		Apt Elev	1216

ILS or LOC RWY 21

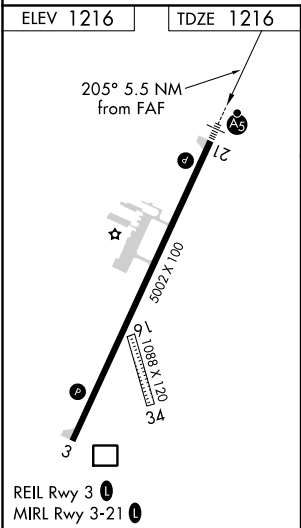
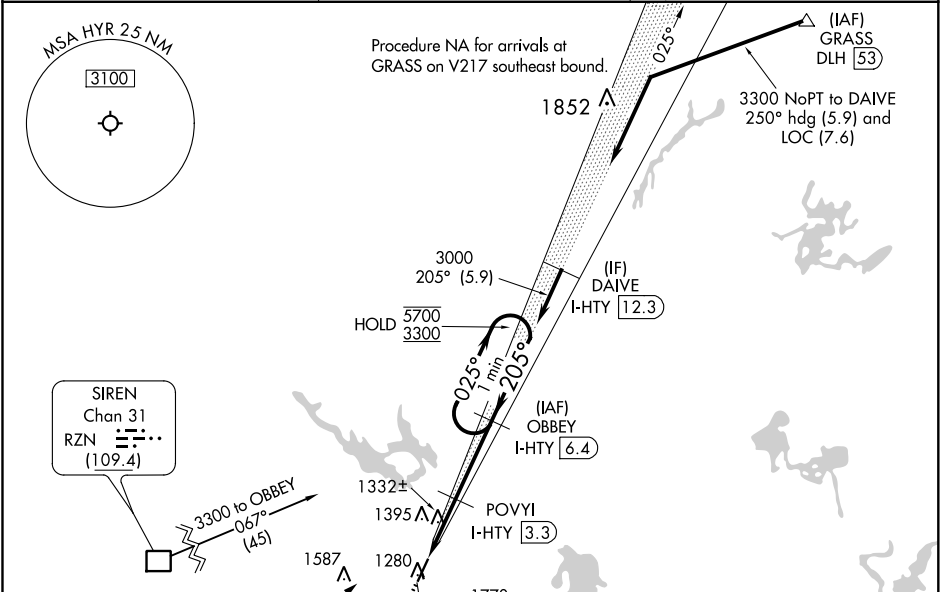
SAWYER COUNTY (HYR)

From RZN DME: RNAV 1-GPS required.
DME required.

MALSR

MISSED APPROACH: Climb to 2200 then climbing right turn to 3300 on heading 060° and I-HTY northeast course to OBBEY/ I-HTY 6.4 DME and hold.

ASOS 118.4	MINNEAPOLIS CENTER 126.45 276.4	UNICOM 122.8 (CTAF) 0
---------------	------------------------------------	--------------------------



ELEV 1216	TDZE 1216
2200	3300
I-HTY NE crs	OBBEY I-HTY 6.4
OBBEY I-HTY 6.4	OBBEY I-HTY 6.4
One Minute Holding Pattern	
*LOC only.	*I-HTY 2
I-HTY 0.9	POYU I-HTY 3.3
*2020	3000
1.1 NM	1.3 NM
3.1 NM	
CATEGORY	A
S-ILS 21	1518-3/4
S-LOC 21	1600-3/4
CIRCLING	1860-1
644 (700-1)	2060-1 1/4
844 (900-1 1/4)	2120-2 3/4
904 (1000-2 3/4)	2120-3
904 (1000-3)	