

WAAS
CH **90400**
W03A

APP CRS
025°

Rwy Idg
TDZE
Apt Elev

5002
1214
1216

RNAV (GPS) RWY 3

SAWYER COUNTY (HYR)

RNP APCH.

▼

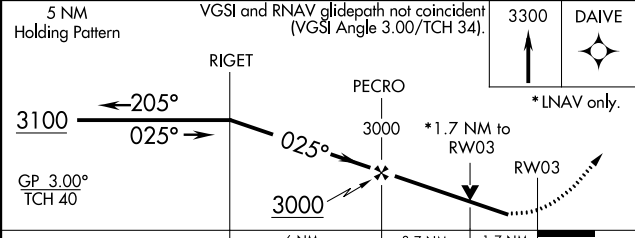
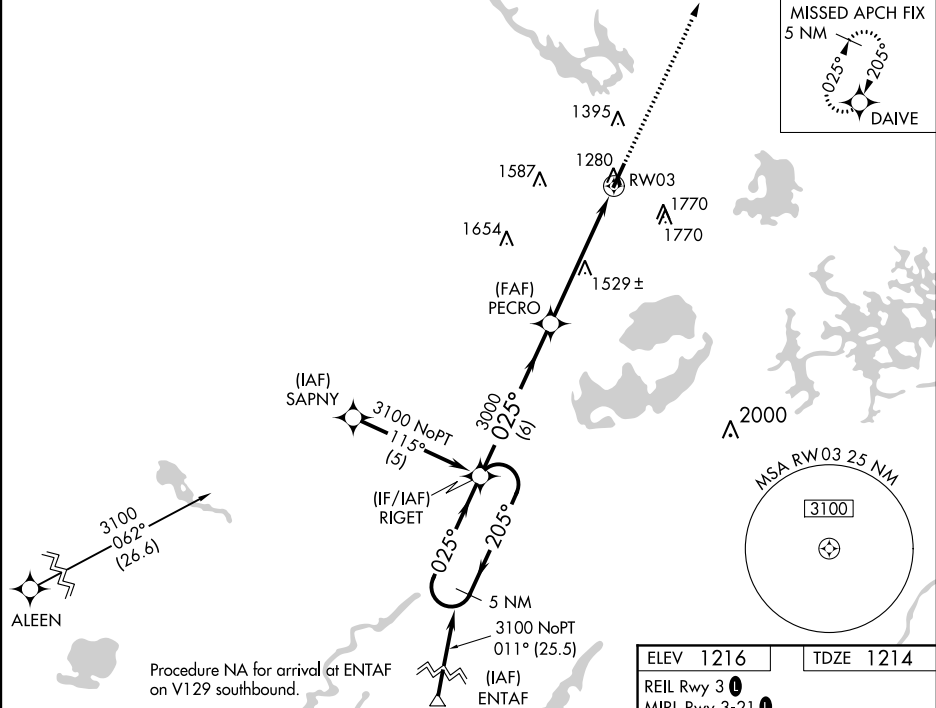
For uncompensated Baro-VNAV systems, LNAV/VNAV NA below -22°C or above 54°C.

▲

Rwy 3 helicopter visibility reduction below ¾ SM NA. Circling NA to Rwy's 16 and 34.

MISSED APPROACH:
Climb to 3300 direct
DAIVE and hold.

ASOS 118.4	MINNEAPOLIS CENTER 126.45 276.4	UNICOM 122.8 (CTAF) 0
----------------------	---	---------------------------------



CATEGORY	A	B	C	D
LPV DA	1514-1 300 (300-1)			
LNAV/VNAV DA	1916-2½ 702 (700-2½)			
LNAV MDA	1780-1 566 (600-1)	1780-1½ 566 (600-1½)	1780-1¾ 566 (600-1¾)	
CIRCLING	1860-1 644 (700-1)	2060-1¼ 844 (900-1¼)	2120-2¾ 904 (1000-2¾)	2120-3 904 (1000-3)

ELEV 1216 TDZE 1214

REIL Rwy 3 0

MIRL Rwy 3-21 0

