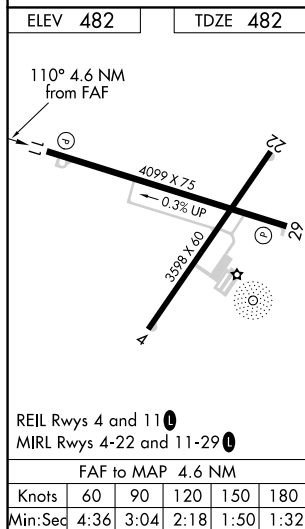


LOC RWY 11
OLNEY-NOBLE (OLY)

MISSED APPROACH: Climbing right turn to 2400 on heading 290° and on SAM VOR/DME R-313 to ALAKE INT/I-LZW LOC/DME 14.8 DME and hold.

UNICOM
123.0 (CTAF) 

<p>VGSI and descent angles not coincident (VGSI Angle 3.00/TCH 22).</p> <p>One Minute Holding Pattern</p> <p>ALAKE INT I-LZW 14.8 SAM 25.8</p> <p>LYMON INT I-LZW 5.4</p> <p>2400 hdg 290°</p> <p>SAM R-313</p> <p>ALAKE INT</p> <p>2000 ← 290° 110° →</p> <p>2000</p> <p>I-LZW 2.1</p> <p>I-LZW 0.8</p> <p>3.03° TCH 45</p> <p>9.4 NM</p> <p>3.3 NM</p> <p>1.3 NM</p>				
CATEGORY	A	B	C	D
S-11	920-1	438 (500-1)	920-1¼	438 (500-1¼)
CIRCLING	960-1	478 (500-1)	960-1½ 478 (500-1½)	1180-2¼ 698 (700-2¼)

EC-3, 03 DEC 2020 to 31 DEC 2020