

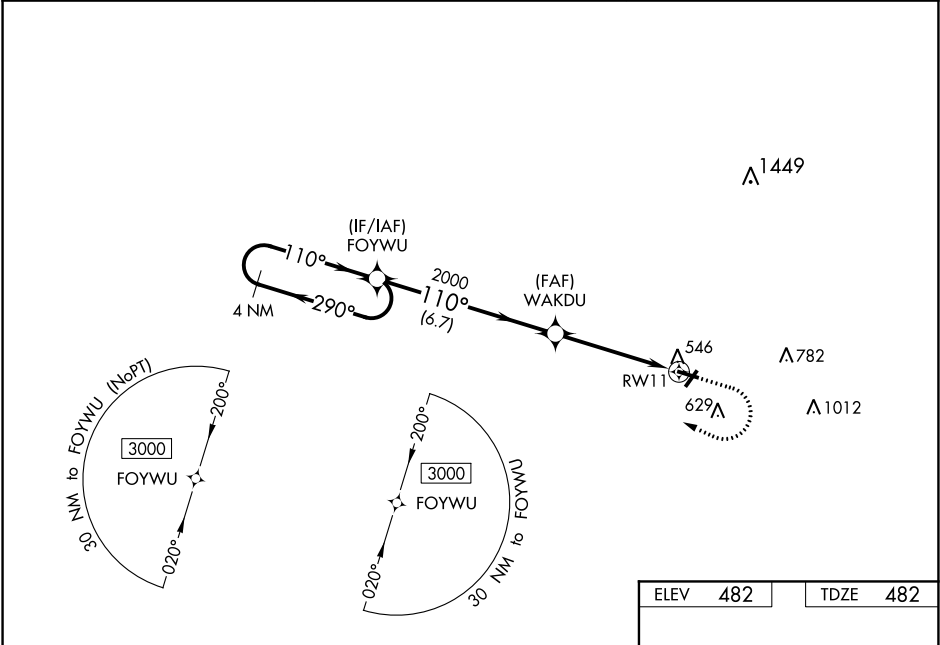
WAAS CH <b>82231</b> <b>W11A</b>	APP CRS <b>110°</b>	Rwy Idg TDZE <b>482</b> Apt Elev <b>482</b>
--	------------------------	---

RNAV (GPS) RWY 11

OLNEY-NOBLE (OLY)

RNP APCH.	<div><div>▼</div>Baro-VNAV NA when using Evansville altimeter setting. For uncompensated Baro-VNAV systems, LNAV/VNAV NA below -15°C or above 54°C. When local altimeter setting not received, use <div>▲</div> Evansville altimeter setting and increase all DAs 126 feet, MDAs 140 feet; increase LNAV/VNAV all Cats visibility ½ SM, LNAV Cat C/D ¾ SM and Circling Cat C ¼ SM and Cat D ½ SM.</div>	MISSED APPROACH: Climb to 1500 then climbing right turn to 3000 direct FOYWU and hold.
-----------	---	---

AWOS-3 <b>119.275</b>	KANSAS CITY CENTER <b>124.3 269.15</b>	UNICOM <b>123.0 (CTAF) 0</b>
--------------------------	---	---------------------------------



VGSI and RNAV glidepath not coincident (VGSI Angle 3.00/TCH 22).		1500	3000	FOYWU
4 NM Holding Pattern		↑	↷	✧
3000 ← 290° FOYWU 110° →		2000	2000	WAKDU
GP 3.00° TCH 40		RW11		
6.7 NM		4.6 NM		
CATEGORY	A	B	C	D
LPV DA	732-1		250 (300-1)	
LNAV/VNAV DA	962-1½		480 (500-1½)	
LNAV MDA	920-1	438 (500-1)	920-1¼	438 (500-1¼)
<div>◼</div> CIRCLING	960-1	478 (500-1)	960-1½ 478 (500-1½)	1180-2¼ 698 (700-2¼)

ELEV 482

TDZE 482

110° to RW11

4099 X 75  
0.3% UP

2398 X 60

REIL Rwy 4 and 11 0

MRL Rwy 4-22 and 11-29 0