

APP CRS  
**039°**

Rwy Idg  
**3598**

TDZE  
**472**

Apt Elev  
**482**

RNAV (GPS) RWY 4

OLNEY-NOBLE (OLY)

RNP APCH.

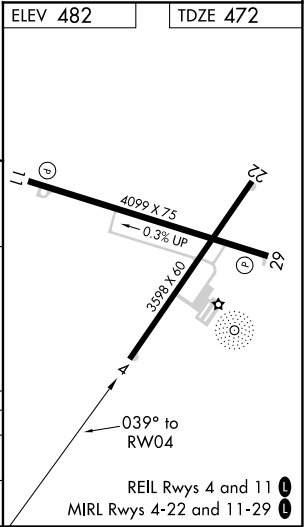
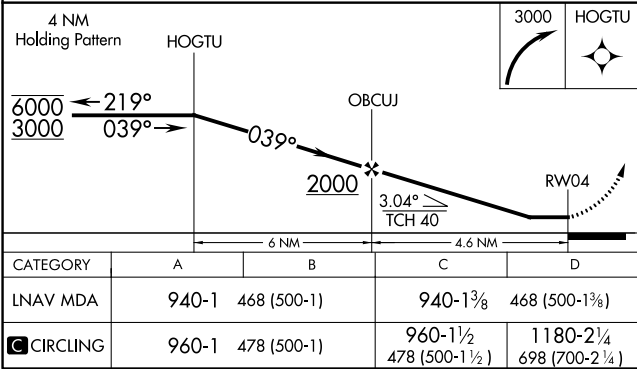
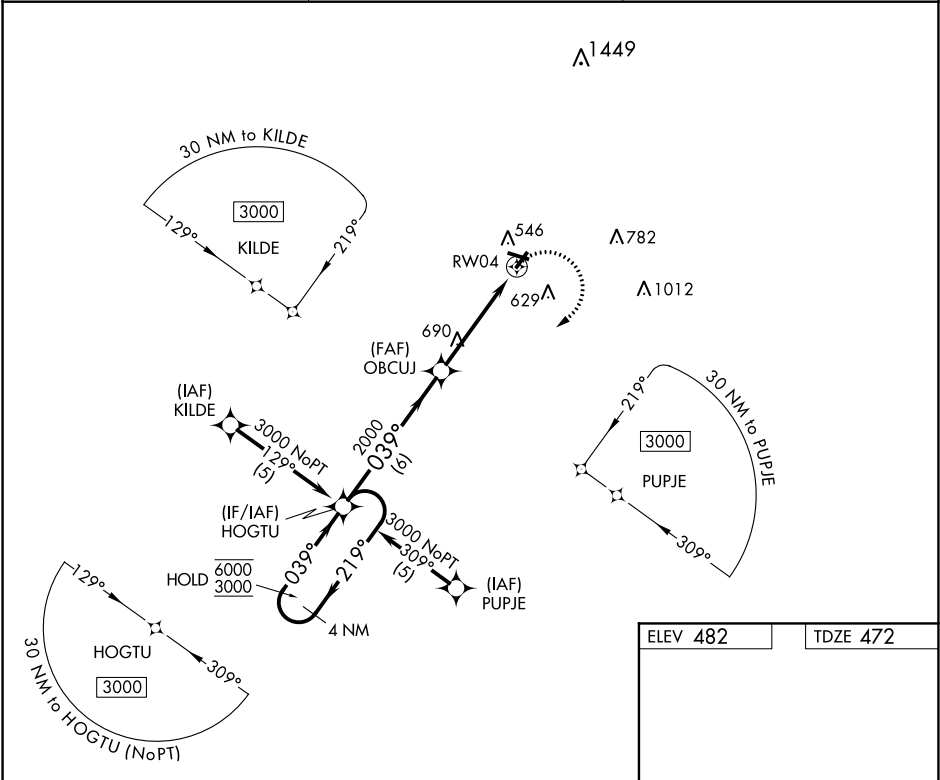
▼

▲

Rwy 4 helicopter visibility reduction below ¾ SM NA. When local altimeter setting not received, use Evansville Rgnl altimeter setting and increase all MDA 140 feet and increase LNAV Cat C/D and Circling Cat C/D visibility ½ mile.

MISSED APPROACH:  
Climbing right turn to 3000 direct HOGTU and hold.

AWOS-3 <b>119.275</b>	KANSAS CITY CENTER <b>124.3 269.15</b>	UNICOM <b>123.0 (CTAF) 0</b>
--------------------------	---	---------------------------------



EC-3, 03 DEC 2020 to 31 DEC 2020

EC-3, 03 DEC 2020 to 31 DEC 2020