

▼

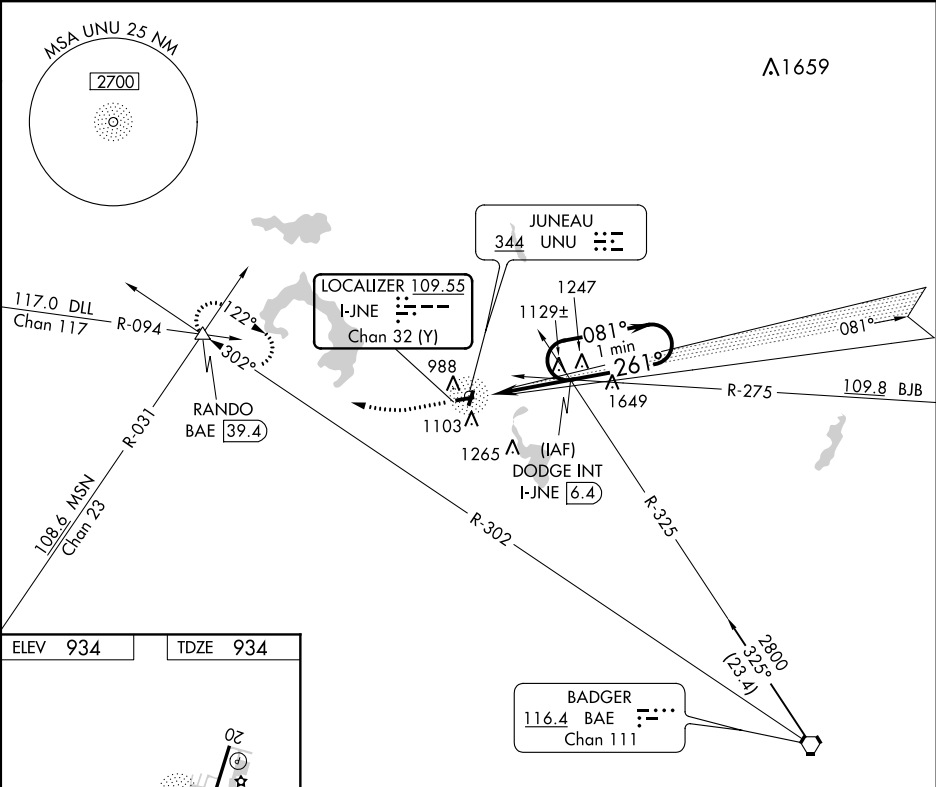
▲

When local altimeter setting not received, use Dane County Rgnl-Truax Field altimeter setting and increase all MDAs 100 feet, and increase Circling Cat C visibility ¼ SM. Inoperative table does not apply. Visibility reduction by helicopters NA.

MALSF

MISSED APPROACH: Climb to 2800 then climbing right turn to 3000 via BAE VORTAC R-302 to RANDO Int/BAE 39.4 DME and hold.

AWOS-3 120.825	MADISON APP CON 119.15 343.7	UNICOM 122.7 (CTAF) 0
--------------------------	--	---------------------------------



ELEV 934

TDZE 934

REIL Rwy 2, 8, and 20
MIRL Rwy 8-26 and 2-20

FAF to MAP 5.4 NM

Knots	60	90	120	150	180
Min:Sec	5:24	3:36	2:42	2:10	1:48

<div><div>2800 ↑</div><div>3000 BAE R-302</div><div>RANDO △</div></div> <div><div>DODGE INT I-JNE 6.4</div><div>One Minute Holding Pattern</div></div>				
CATEGORY	A	B	C	D
S-26	1380-1	446 (500-1)	1380-1¼ 446 (500-1¼)	NA
CIRCLING	1440-1	506 (600-1)	1440-1½ 506 (600-1½)	NA