

NDB UNU	APP CRS	Rwy Idg	4028
344	209°	TDZE	934
		Apt Elev	934

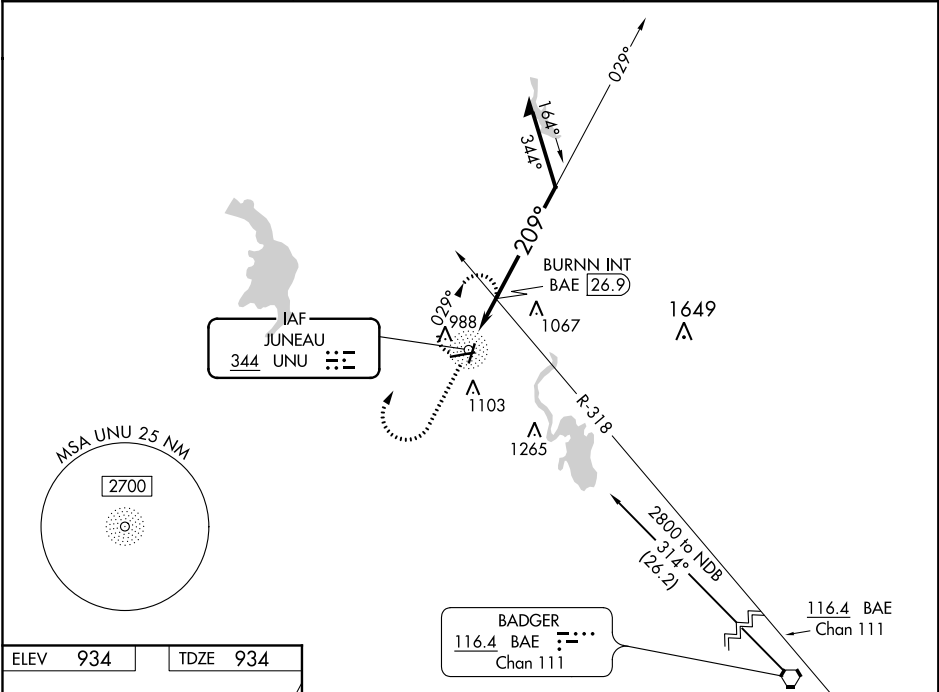
NDB RWY 20
DODGE COUNTY (UNU)

⚠ If local altimeter setting not received, use Dane County Rgnl-Truax Field altimeter setting and increase all MDAs 100 feet.

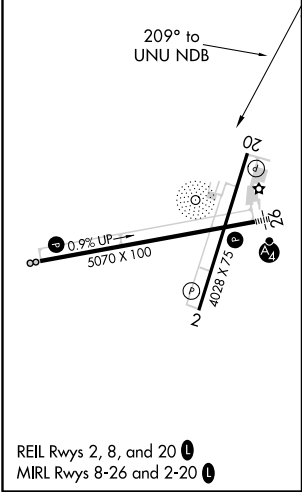
⚠ Visibility reduction by helicopters NA.

MISSED APPROACH: Climb to 2000 then climbing right turn to 2700 direct UNU NDB and hold.

AWOS-3 120.825	MADISON APP CON 119.15 343.7	UNICOM 122.7 (CTAF) 0
-------------------	---------------------------------	--------------------------



ELEV 934	TDZE 934
----------	----------



2000	2700	UNU	UNU NDB	VGSI and descent angles not coincident (VGSI Angle 3.00/TCH 25).
				Remain within 10 NM
*1640 when using Dane County Rgnl-Truax Field altimeter setting.				
CATEGORY	A	B	C	D
S-20	1540-1	606 (700-1)	1540-1¾ 606 (700-1¾)	NA
CIRCLING	1540-1	606 (700-1)	1540-1¾ 606 (700-1¾)	NA
BURNN FIX MINIMUMS				
S-20	1420-1	486 (500-1)	1420-1¼ 486 (500-1¼)	NA
CIRCLING	1440-1	506 (600-1)	1440-1½ 506 (600-1½)	NA