

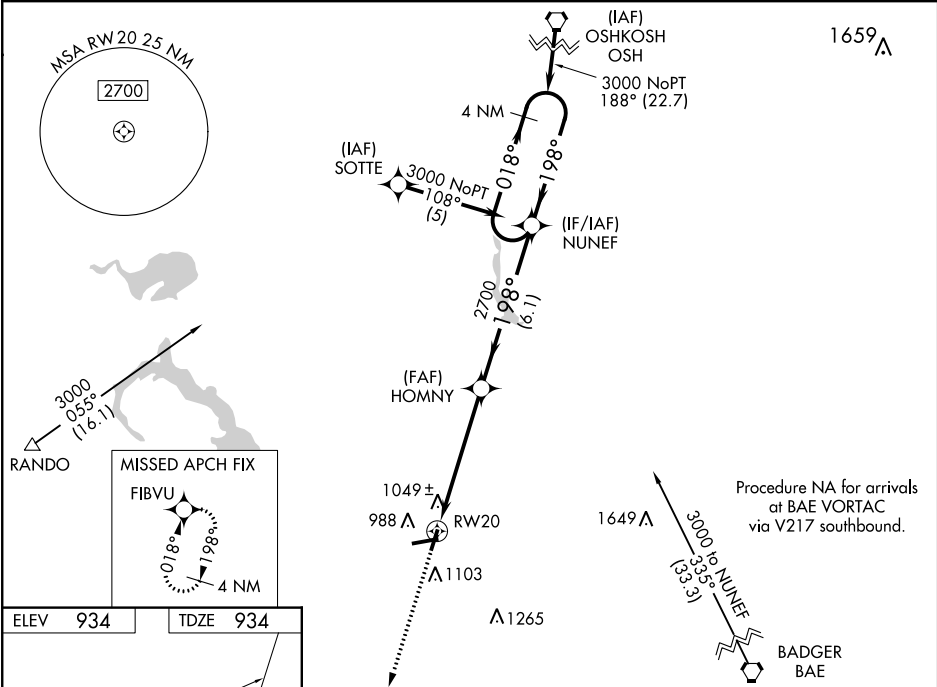
WAAS CH <b>61307</b> <b>W20A</b>	APP CRS <b>198°</b>	Rwy Idg TDZE <b>934</b> Apt Elev <b>934</b>	<b>4028</b>
--	------------------------	---	-------------

**RNAV (GPS) RWY 20**  
DODGE COUNTY (UNU)

**⚠** For uncompensated Baro-VNAV systems, LNAV/VNAV NA below -16° C (4° F) or above 54° C (130° F). DME/DME RNP-0.3 NA. When local altimeter setting not received, use Dane County Rgnl-Truax Field altimeter setting and increase all DA/MDA 100 feet, increase visibilities ¼ mile. Baro-VNAV NA when using Dane County Rgnl-Truax Field altimeter setting. Visibility reduction by helicopters NA.

**MISSED APPROACH:**  
Climb to 3000 direct FIBVU and hold.

AWOS-3 <b>120.825</b>	MADISON APP CON <b>119.15 343.7</b>	UNICOM <b>122.7 (CTAF) 0</b>
--------------------------	--	---------------------------------



ELEV 934 TDZE 934

198° to RW20

0.9% UP 5070 X 100

4028 X 75

REIL Rws 2, 8, and 20 0

MIRL Rws 8-26 and 2-20 0

3000	FIBVU	VGSI and descent angles not coincident (VGSI Angle 3.00/TCH 25).		4 NM Holding Pattern
HOMNY		198°	018°	3000
RW20		2700	GP 3.00° TCH 40	
5.4 NM		6.1 NM		
CATEGORY	A	B	C	D
LPV DA	1214-1		280 (300-1)	NA
LNAV/VNAV DA	1350-1½		416 (500-1½)	NA
LNAV MDA	1300-1		366 (400-1)	NA
CIRCLING	1440-1	506 (600-1)	1440-1½ 506 (600-1½)	NA

EC-3, 03 DEC 2020 to 31 DEC 2020

EC-3, 03 DEC 2020 to 31 DEC 2020