

WAAS CH <b>97731</b> <b>W28A</b>	APP CRS <b>283°</b>	Rwy Idg TDZE Apt Elev	<b>5006</b> <b>906</b> <b>906</b>
--	------------------------	-----------------------------	---

RNAV (GPS) RWY 28

L O SIMENSTAD MUNI (OEO)

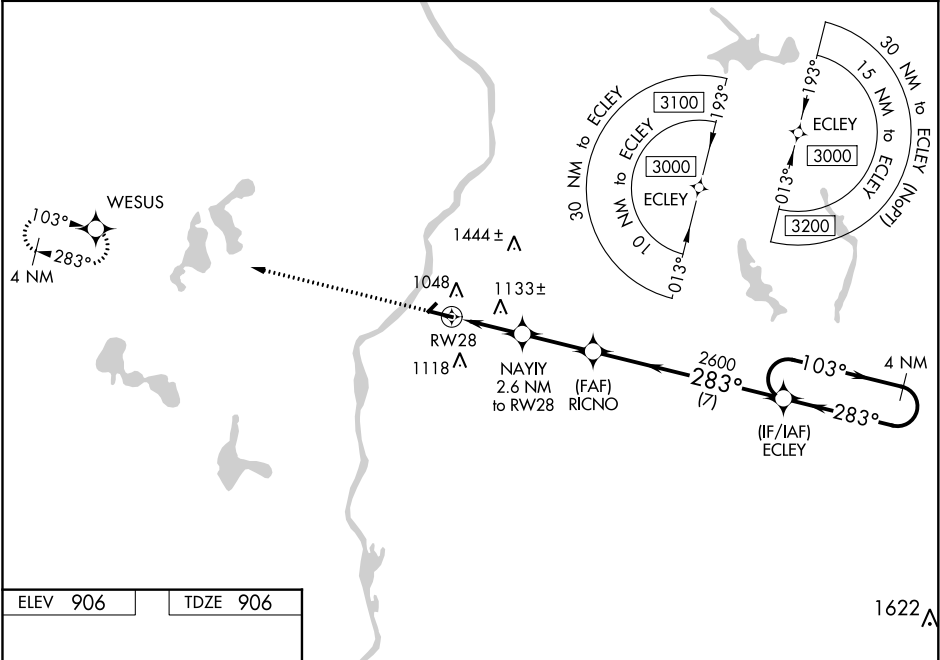
▼

▲

For uncompensated Baro-VNAV systems, LNAV/VNAV NA below -16°C (4°F) or above 54°C (130°F).  
DME/DME RNP-0.3 NA. VDP and Baro-VNAV NA when using Anoka County-Blaine (Janes Field) altimeter setting. Helicopter visibility reduction below 3⁄4 SM NA.  
When local altimeter setting not received, use Anoka County-Blaine (Janes Field) altimeter setting and increase all DA 57 feet and all MDA 60 feet. Increase LPV all Cats visibility 1⁄8 mile, LNAV/VNAV all Cats, LNAV Cat C and Circling Cat C visibility 1⁄4 mile.

MISSED APPROACH:  
Climb to 3000 direct WESUS and hold.

AWOS-3 <b>119.925</b>	MINNEAPOLIS APP CON <b>121.2 335.65</b>	GCO <b>121.725</b>	CTAF <b>122.90</b>
--------------------------	--	-----------------------	-----------------------



ELEV 906      TDZE 906

REIL Rwy 28  
MIRL Rwy 10 and 28

3000 ↑	WESUS ✦	4 NM Holding Pattern			
* LNAV only	NAYYY 2.6 NM to RW28	RICNO 2600	ECLEY	103° → ← 283°	3000
* 1.4 NM to RW28		2600	283°		GP 3.00° TCH 37
RW28		*1760			
1.4 NM	1.2	2.6 NM	7 NM		
CATEGORY	A	B	C	D	
LPV DA	1106-¾ 200 (200-¾)			NA	
LNAV/ VNAV	1179-⅞ 273 (300-⅞)			NA	
LNAV MDA	1400-1	494 (500-1)	1400-1⅜ 494 (500-1⅜)	NA	
CIRCLING	1400-1 494 (500-1)	1500-1 594 (600-1)	1520-1¾ 614 (700-1¾)	NA	