

LOC/DME I-PJE 108.3 Chan 20	APP CRS 234°	Rwy Idg 5504 TDZE 847 Apt Elev 859
---	------------------------	---

ILS or LOC RWY 24
ALBERTUS (FEP)

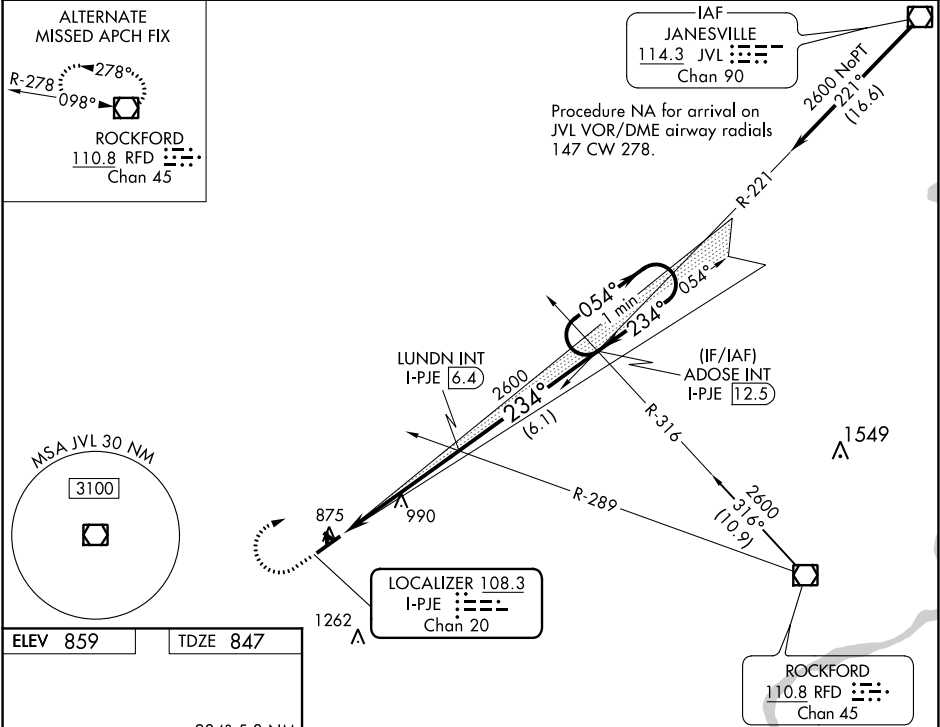
NA

For inoperative MALSRS when using Rockford altimeter setting, increase S-ILS 24 all Cats visibility to ½ mile. When local altimeter setting not received, use Rockford altimeter setting: increase all DA to 1114 feet; increase all MDA 80 feet and S-LOC 24 Cat C/D visibility ½ mile and Circling Cat C ¼ mile. Circling NA to Rwy 13, 18, 31, 36.

MALSRS

MISSED APPROACH: Climb to 1400 then climbing right turn to 2600 via JVL VOR/DME R-221 to ADOSE INT/I-PJE 12.5 DME and hold.

AWOS-3 120.525	ROCKFORD APP CON 126.0 327.0	CINC DEL 121.85	UNICOM 122.8 (CTAF)
--------------------------	--	---------------------------	-------------------------------



234° 5.3 NM from FAF		1400	2600	ADOSE INT	LUNDN INT I-PJE 6.4	ADOSE INT I-PJE 12.5	One Minute Holding Pattern
		JVL R-221					
		I-PJE 2.4	2600				
		I-PJE 1.1					
		1.3	4 NM	6.1 NM			
CATEGORY		A	B	C	D		
S-ILS 24		1047-½		200 (200-½)			
S-LOC 24		1300-½ 453 (500-½)		1300-¾ 453 (500-¾)			
CIRCLING		1300-1 441 (500-1)	1340-1 481 (500-1)	1380-1½ 521 (600-1½)	1440-2 581 (600-2)		