


WAAS CH 78403 W24A	APP CRS 234°	Rwy Idg TDZE 847 Apt Elev 859
--	------------------------	---

RNAV (GPS) RWY 24

ALBERTUS (F'EP)

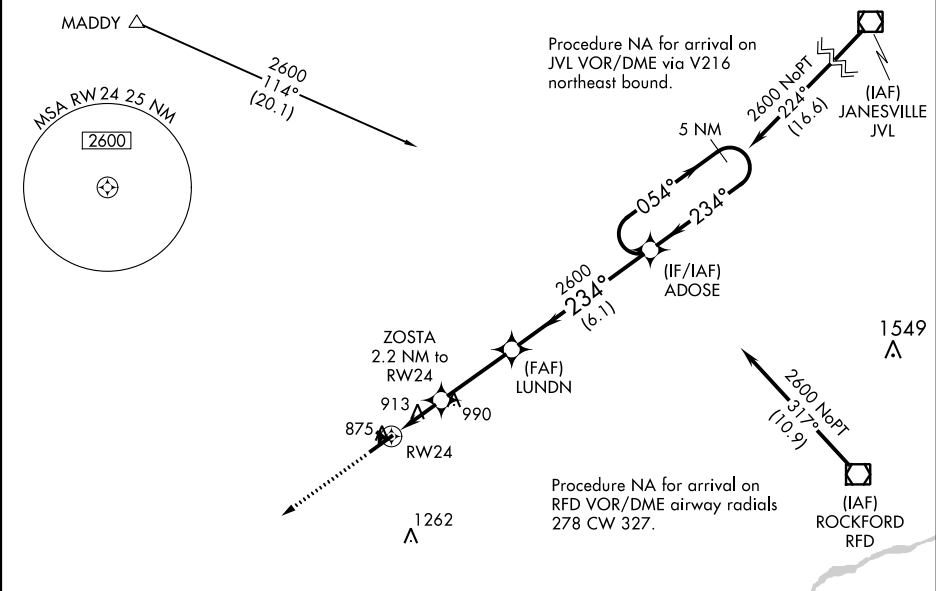
▼ When local altimeter setting not received, use Rockford altimeter setting; increase LPV and LNAV/VNAV DA to 1164 feet and all visibilities ½ mile; increase all MDA 80 feet and LNAV Cat C/D and Circling Cat C visibility ¼ mile. DME/DME RNP-0.3 NA. For uncompensated Baro-VNAV systems, LNAV/VNAV NA below -16° C (4° F) or above 47° C (116° F). Baro-VNAV and VDP NA when using Rockford altimeter setting. For inoperative MALSR, increase LPV and LNAV/VNAV all Cats visibility to ½ mile. For inoperative MALSR when using Rockford altimeter setting, increase LPV all Cats and LNAV C/D visibility to 1 ½ mile. Circling NA to Rwy's 13, 18, 31, 36.

MALSR

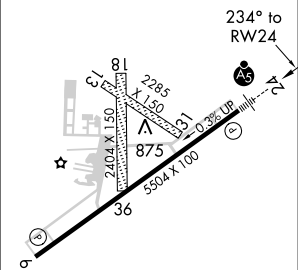


MISSED APPROACH:
Climb to 2600 direct HANKS and hold.

AWOS-3 120.525	ROCKFORD APP CON 126.0 327.0	CLNC DEL 121.85	UNICOM 122.8 (CTAF)
--------------------------	--	---------------------------	-------------------------------



ELEV 859 TDZE 847



CATEGORY	A	B	C	D
LPV DA	1097-½		250 (300-½)	
LNAV/VNAV DA	1097-½		250 (300-½)	
LNAV MDA	1180-½		333 (400-½)	1180-½ 333 (400-½)
CIRCLING	1300-1 441 (500-1)	1340-1 481 (500-1)	1380-1½ 521 (600-½)	1440-2 581 (600-2)

MIRL Rwy 6-24