

WAAS CH <b>56404</b> <b>W06A</b>	APP CRS <b>054°</b>	Rwy Idg TDZE <b>859</b> Apt Elev <b>859</b>
--	------------------------	---

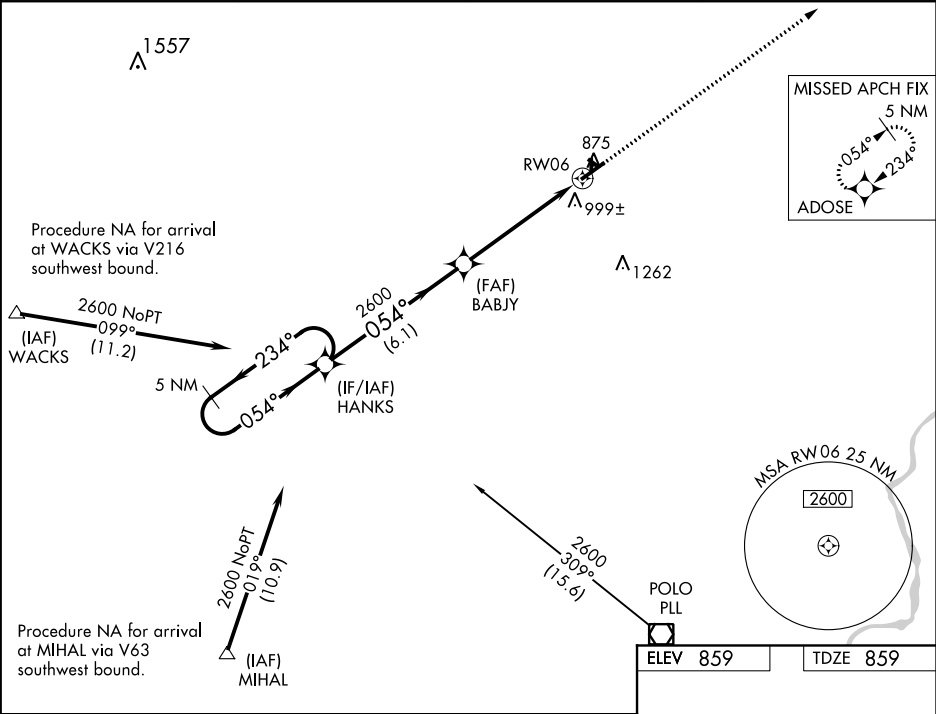
RNAV (GPS) RWY 6

ALBERTUS (FEP)

When local altimeter setting not received, use Rockford altimeter setting: increase LPV DA to 1176 feet, LNAV/VNAV DA to 1438 feet and all visibilities ¼ mile; increase all MDA 80 feet and LNAV Cat C/D and Circling Cat C visibility ¼ mile. DME/DME RNP-0.3 NA. For uncompensated Baro-VNAV systems, LNAV/VNAV NA below -16° C (4° F) or above 47° C (116° F). Baro-VNAV and VDP NA when using Rockford altimeter setting. Circling NA to Rwy 13, 18, 31, 36.

MISSED APPROACH:  
Climb to 2600 direct ADOSE and hold.

AWOS-3 <b>120.525</b>	ROCKFORD APP CON <b>126.0 327.0</b>	CLNC DEL <b>121.85</b>	UNICOM <b>122.8 (CTAF) 0</b>
--------------------------	--	---------------------------	---------------------------------



5 NM Holding Pattern				
HANKS				
BABJY				
GP 3.00° TCH 50				
2600 ← 234° / 054° → 2600				
*1.1 NM to RW06				
*LNAV only.				
6.1 NM      4.1 NM      1.1 NM				
CATEGORY	A	B	C	D
LPV DA	1109-¾ 250 (300-¾)			
LNAV/VNAV DA	1371-1¾ 512 (600-1¾)			
LNAV MDA	1260-1 401 (500-1)		1260-1½ 401 (500-1½)	
CIRCLING	1300-1 441 (500-1)	1340-1 481 (500-1)	1380-1½ 521 (600-1½)	1440-2 581 (600-2)

