

WAAS CH 70716 W24A	APP CRS 240°	Rwy Idg 3897 TDZE 884 Apt Elev 887
--	------------------------	---

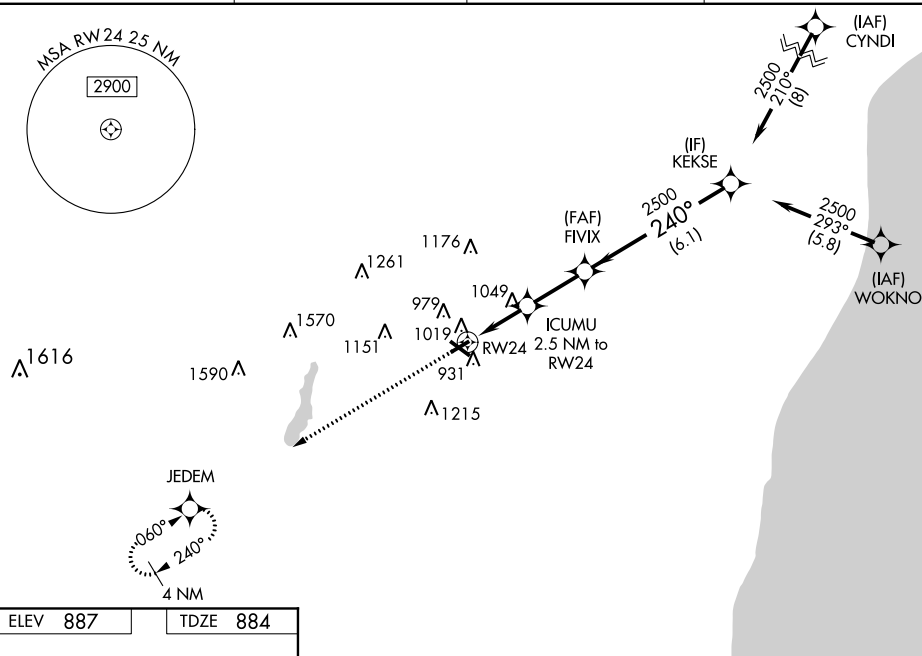
RNAV (GPS) RWY 24

RNP APCH.

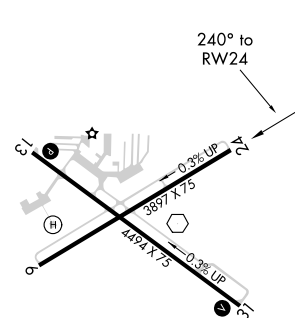
▼ For uncompensated Baro-VNAV systems, LNAV/VNAV NA below -16°C or above 47°C. Rwy 24 helicopter visibility reduction below 3/4 SM. NA. Baro-VNAV and VDP NA when using Lawrence J Timmerman altimeter setting. When local altimeter setting not received, use Lawrence J Timmerman altimeter setting: increase LPV DA to 1260 feet, LNAV/VNAV DA to 1433 feet and all visibilities 1/4 SM; increase all MDAs 80 feet and visibility LNAV Cat D and Circling Cat C/D 1/4 SM.



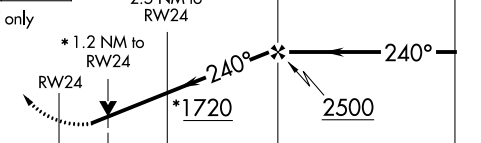
MISSED APPROACH:
Climb to 3000 direct
JEDEM and hold.

AWOS-3 120.0	MILWAUKEE APP CON 125.35 307.0	CLNC DEL 124.75	UNICOM 122.8 (CTAF) ①
------------------------	--	---------------------------	---------------------------------



ELEV 887		TDZE 884
----------	--	----------



3000 JEDEM  		Procedure Turn NA			
*LNAV only					
CATEGORY		A	B	C	D
LPV DA		1196-1		312 (400-1)	
LNAV/VNAV DA		1369-1 ³ / ₄		485 (500-1 ³ / ₄)	
LNAV MDA		1300-1	416 (500-1)	1300-1 ¹ / ₄	416 (500-1 ¹ / ₄)
CIRCLING		1420-1	533 (600-1)	1460-1 ¹ / ₂ 573 (600-1 ¹ / ₂)	1520-2 633 (700-2)