

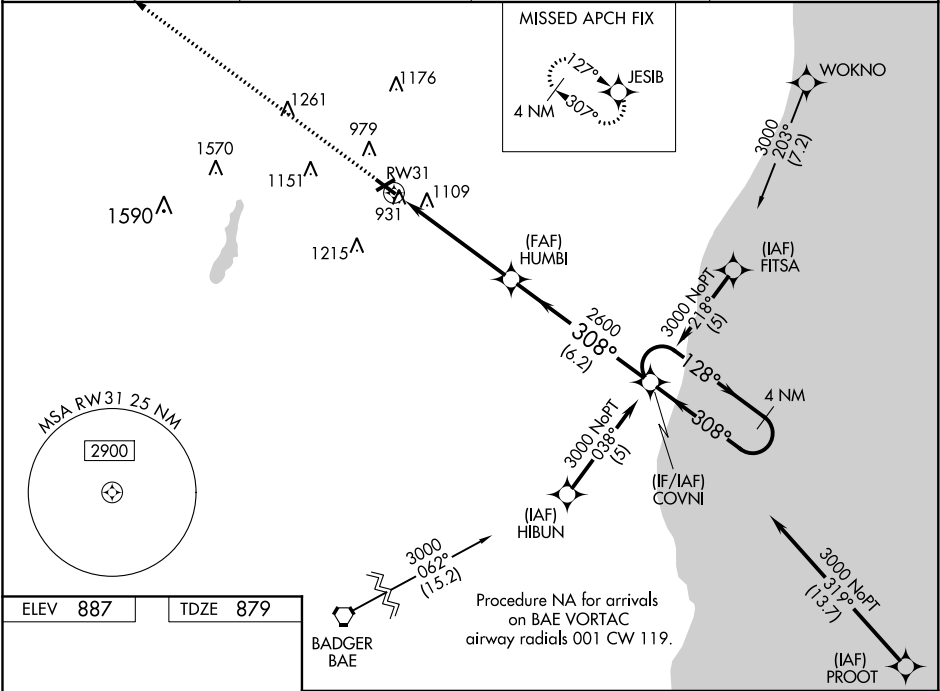
WAAS CH <b>93816</b> <b>W31A</b>	APP CRS <b>308°</b>	Rwy Idg TDZE <b>879</b> Apt Elev <b>887</b>
--	------------------------	---

RNAV (GPS) RWY 31  
WEST BEND MUNI (E/TB)

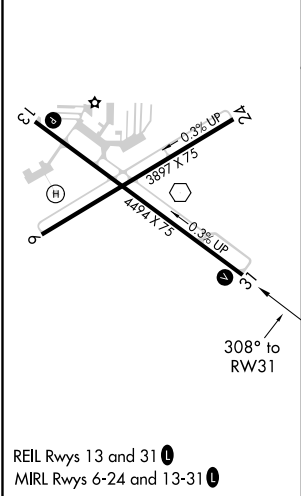
**⚠** Baro-VNAV NA when using Milwaukee/Lawrence J. Timmerman altimeter setting. For uncompensated Baro-VNAV systems, LNAV/VNAV NA below -16°C (4°F) or above 47°C (116°F). DME/DME RNP-0.3 NA. Helicopter visibility reduction below ¾ SM NA. When local altimeter setting not received, use Milwaukee/Lawrence J. Timmerman altimeter setting and increase all DA 64 feet and all MDA 80 feet. Increase LPV all Cats and LNAV and Circling Cats C/D visibility ¼ mile. Night landing: Rwy 6 NA.

**MISSED APPROACH:**  
Climb to 3000 direct JESIB and hold.

AWOS-3 <b>120.0</b>	MILWAUKEE APP CON <b>125.35 307.0</b>	CLNC DEL <b>124.75</b>	UNICOM <b>122.8 (CTAF)</b> <b>📻</b>
------------------------	--	---------------------------	--



ELEV <b>887</b>	TDZE <b>879</b>
-----------------	-----------------



3000 ↑		JESIB 		VGSI and RNAV glidepath not coincident (VGSI Angle 3.00/TCH 28).		COVNI		4 NM Holding Pattern	
RW31 		HUMBI 		2600		128° → ← 308°		3000	
5.2 NM		6.2 NM				GP 3.00° TCH 45°			
CATEGORY	A		B		C		D		
LPV DA			1175-1		296 (300-1)				
LNAV/VNAV DA			1482-2		603 (600-2)				
LNAV MDA	1420-1		541 (600-1)		1420-1½ 541 (600-1½)		1420-1¾ 541 (600-1¾)		
CIRCLING	1420-1		533 (600-1)		1460-1½ 573 (600-1½)		1520-2 633 (700-2)		

EC-3, 03 DEC 2020 to 31 DEC 2020

EC-3, 03 DEC 2020 to 31 DEC 2020