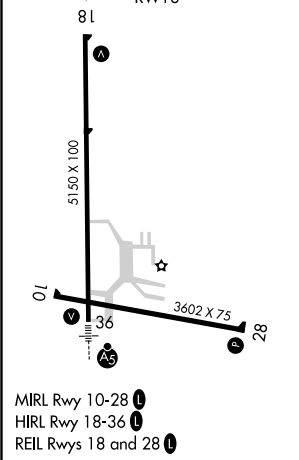
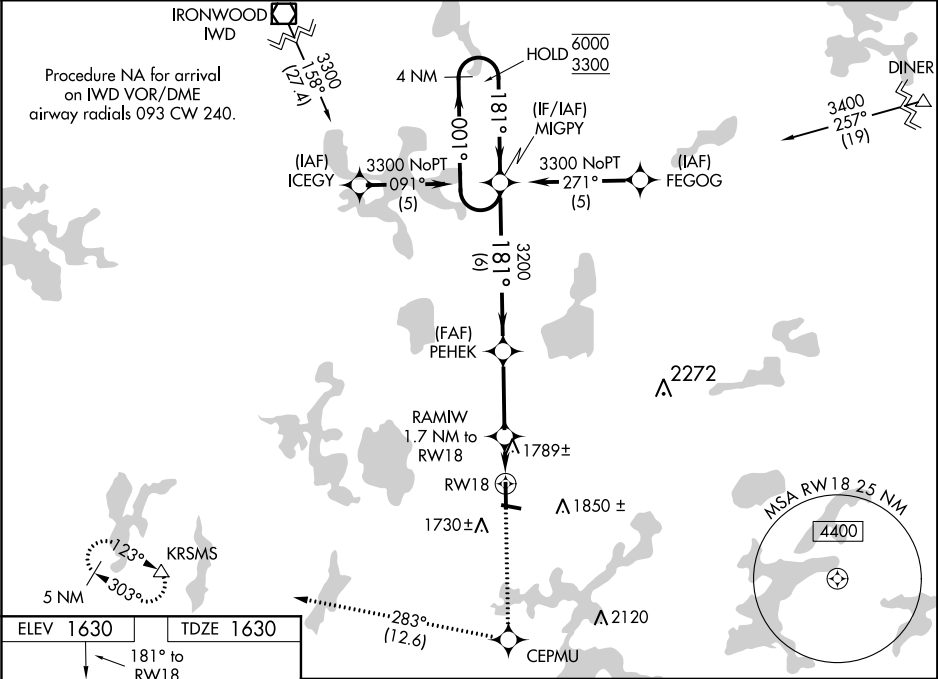


WAAS CH 72915 W18A	APP CRS 181°	Rwy Idg TDZE Apt Elev	5150 1630 1630
--	------------------------	-----------------------------	---

RNAV (GPS) RWY 18

LAKELAND/NOBLE F LEE MEMORIAL FIELD (A.R.V)

RNP APCH.		MISSED APPROACH: Climb to 6000 direct CEPMU and right turn on track 283° to KRSMs and hold, continue climb-in-hold to 6000.
<div><div></div><div>⚠</div><div>Circling Rwy 10, 28 NA at night. Rwy 18 helicopter visibility reduction below ¾ SM NA. For uncompensated Baro-VNAV systems, LNAV/VNAV NA below -18°C or above 54°C.</div></div>		
AWOS-3 121.125	MINNEAPOLIS CENTER 133.65 281.5	UNICOM 122.7 (CTAF) 0



ELEV 1630	TDZE 1630	6000	CEPMU	KRSMs	4 NM Holding Pattern
181° to RWY 18		tr 283°			
* LNAV only.					
RAMIW 1.7 NM to RWY 18					
* 1.2 NM to RWY 18					
* 2200					
1.2 NM 0.6 NM 3 NM 6 NM					
CATEGORY	A	B	C	D	
LPV DA	1974-1¼	344 (400-1¼)			
LNAV/VNAV DA	2101-1¾	471 (500-1¾)			
LNAV MDA	2040-1	410 (500-1)	2040-1¼	410 (500-1¼)	
CIRCLING	2100-1	2200-1	2200-1½	2220-2	
	470 (500-1)	570 (600-1)	570 (600-1½)	590 (600-2)	