

APP CRS	Rwy Idg	4000
035°	TDZE	593
	Apf Elev	594

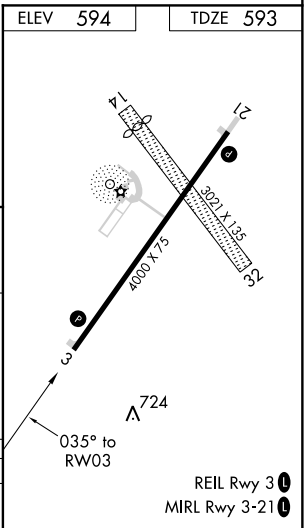
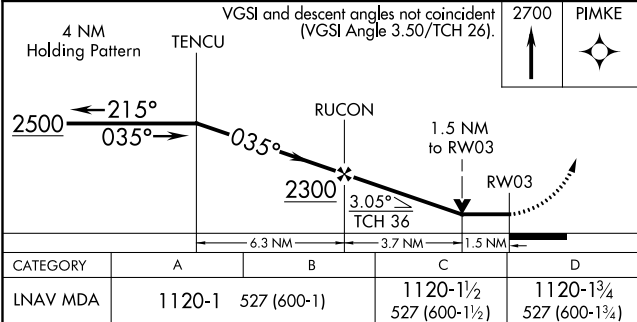
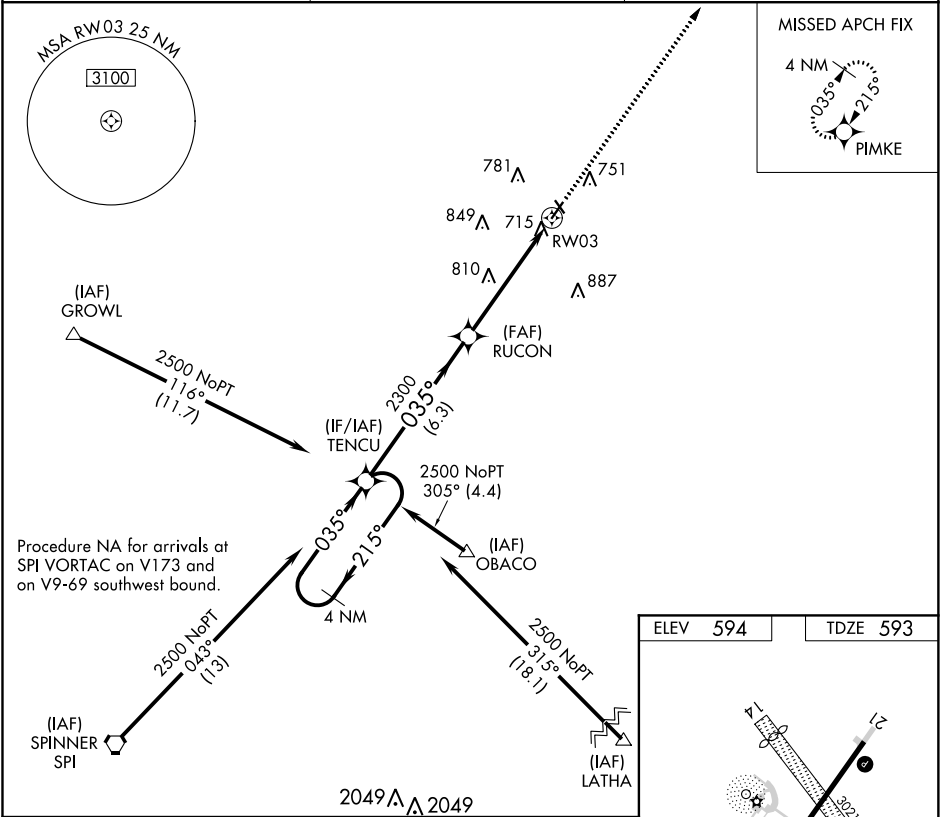
RNAV (GPS) RWY 3
LOGAN COUNTY (AAA)

RNP APCH.

⚠ If local altimeter setting not received, use Springfield, IL altimeter setting and increase all MDAs 60 feet. VDP NA with Springfield, IL altimeter setting. Rwy 3 helicopter visibility reduction below ¼ SM NA.

MISSED APPROACH: Climb to 2700 direct PIMKE and hold.

AWOS-3 118.775	SPRINGFIELD APP CON ★ 126.15 323.0	UNICOM 122.8 (CTAF) 0
-------------------	---------------------------------------	---------------------------------



EC-3, 03 DEC 2020 to 31 DEC 2020

EC-3, 03 DEC 2020 to 31 DEC 2020