

WAAS CH 70604 W07A	APP CRS 069°	Rwy Idg TDZE 1318 Apt Elev 1318
--	------------------------	---

RNAV (GPS) RWY 7

MERRILL MUNI (RRL)

RNP APCH.

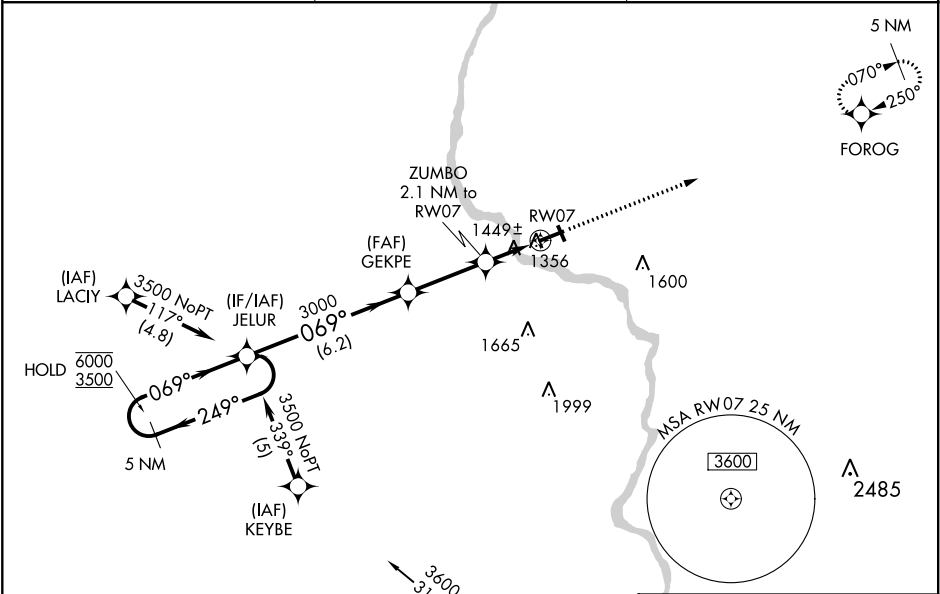
▼

⬆

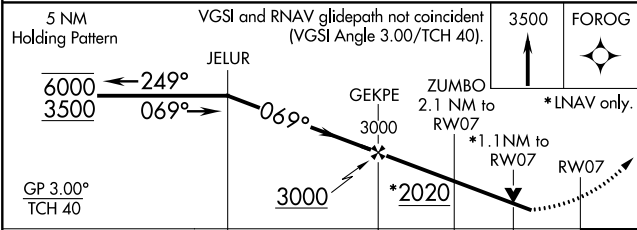
Circling Rwy 16, 34 NA at night. Rwy 7 helicopter visibility reduction below ¾ SM NA.
For uncompensated Baro-VNAV systems, LNAV/VNAV NA below -17°C or above 54°C.

MISSED APPROACH:
Climb to 3500 direct
FOROG and hold.

AWOS-3 119.925	MINNEAPOLIS CENTER 124.4 317.7	UNICOM 122.8 (CTAF) 0
--------------------------	--	---------------------------------



Procedure NA for arrivals at AUV
VOR/DME on airway radials 271 CW 005.



CATEGORY	A	B	C	D
LPV DA	1635-1¼	317 (400-1¼)		NA
LNAV/VNAV DA	1754-1½	436 (500-1½)		NA
LNAV MDA	1700-1	382 (400-1)		NA
CIRCLING	1760-1 442 (500-1)	1780-1 462 (500-1)	1780-1½ 462 (500-1½)	NA

ELEV 1318 TDZE 1318

3500

FOROG

5100 X 75

2997 X 50

297 X 50

34

REIL Rwy 7 and 25 0
MIRL Rwy 16-34 and 7-25 0

EC-3, 03 DEC 2020 to 31 DEC 2020

EC-3, 03 DEC 2020 to 31 DEC 2020