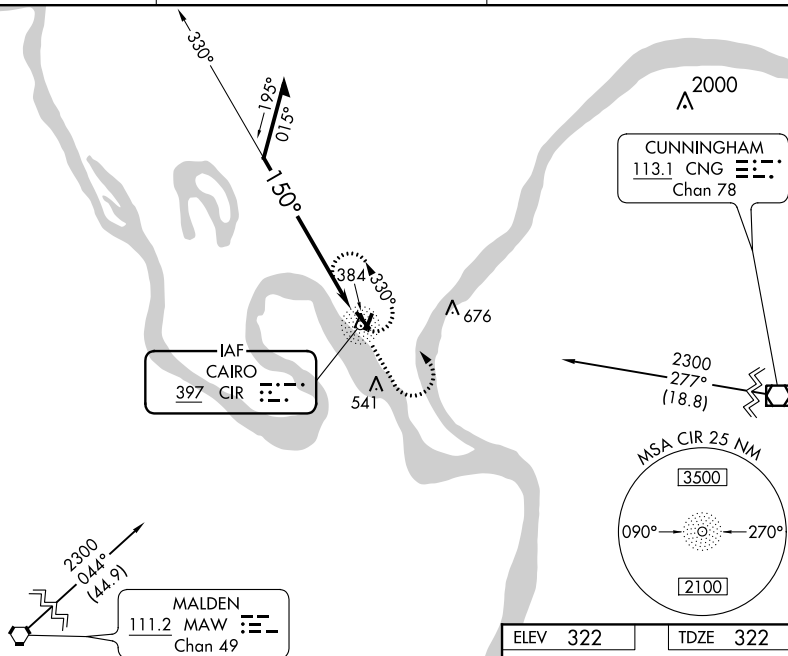


20198

NDB RWY 14
CAIRO RGNL (CIR)

MISSED APPROACH: Climb to 2300 then left turn direct CIR NDB and hold.

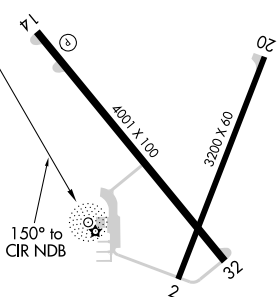
UNICOM
122.8 (CTAF) **L**




CIR

2300

 330°



CATEGORY	A	B	C	D
S-14	1400-1¼ 1078 (1100-1¼)	1400-1½ 1078 (1100-1½)	1400-3 1078 (1100-3)	NA
 CIRCLING	1400-1¼ 1078 (1100-1¼)	1400-1½ 1078 (1100-1½)	1400-3 1078 (1100-3)	NA

REIL Rwy 14
MIRL Rwy 2-20
MIRL Rwy 14-32 **L**

CAIRO RGNL (CIR)
NDB RWY 14

EC-3, 03 DEC 2020 to 31 DEC 2020