

WAAS CH <b>93630</b> <b>W18A</b>	APP CRS <b>179°</b>	Rwy Idg TDZE Apt Elev	<b>4002</b> <b>538</b> <b>538</b>
--	------------------------	-----------------------------	---

RNAV (GPS) RWY 18

SPARTA COMMUNITY-HUNTER FIELD (SAR)

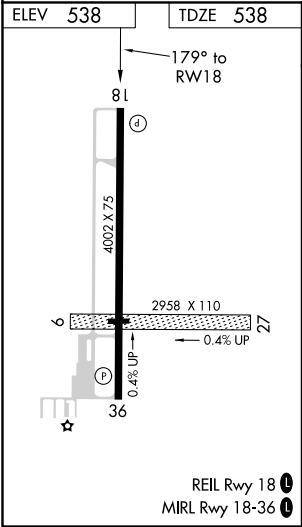
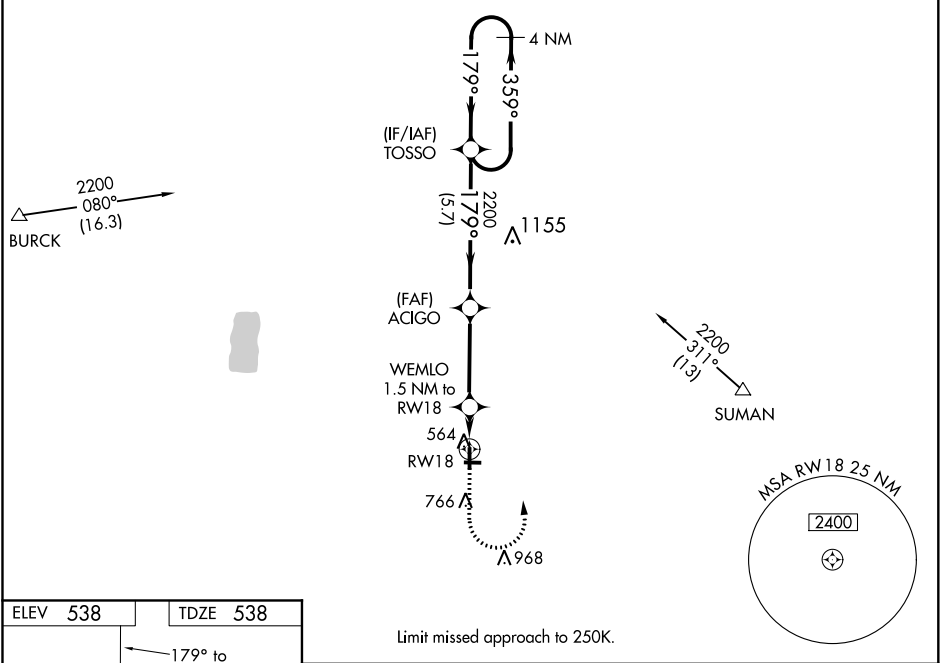
⚠

NA

Baro-VNAV NA when using Scott AFB/Midamerica altimeter setting. For uncompensated Baro-VNAV systems, LNAV/VNAV NA below -16°C (4°F) or above 54°C (130°F). DME/DME RNP-0.3 NA. Helicopter visibility reduction below ¾ SM NA. When local altimeter setting not received, use Scott AFB/Midamerica altimeter setting and increase all DA 68 feet and all MDA 80 feet, increase LNAV and circling Cat C/D visibility ¼ mile. Circling NA to Rwy 9/27.

MISSED APPROACH:  
Climb to 1200 then climbing left turn to 2200 direct TOSSO and hold.

AWOS-3 <b>118,375</b>	ST. LOUIS APP CON <b>125.2 281.5</b>	UNICOM <b>123,075 (CTAF) 0</b>
--------------------------	---	-----------------------------------



Limit missed approach to 250K.				
VGSI and RNAV glidepath not coincident (VGSI Angle 3.00/TCH 20).				
4 NM Holding Pattern				
*LNAV only				
WEMLO 1.5 NM to RWY 18				
ACIGO 2200				
TOSSO				
RWY 18				
*1060				
1.5 NM 3.6 NM 5.7 NM				
CATEGORY	A	B	C	D
LPV DA	788-1 250 (300-1)			
LNAV/VNAV DA	788-1 250 (300-1)			
LNAV MDA	880-1 342 (400-1)			
CIRCLING	980-1 442 (500-1)	1140-1 602 (700-1)	1140-1¾ 602 (700-1¾)	1140-2 602 (700-2)