

WAAS CH 82002 W04A	APP CRS 047°	Rwy Idg 5000 TDZE 1642 Apt Elev 1642
--	------------------------	---

RNAV (GPS) RWY 4

EAGLE RIVER UNION (EGV)

▼

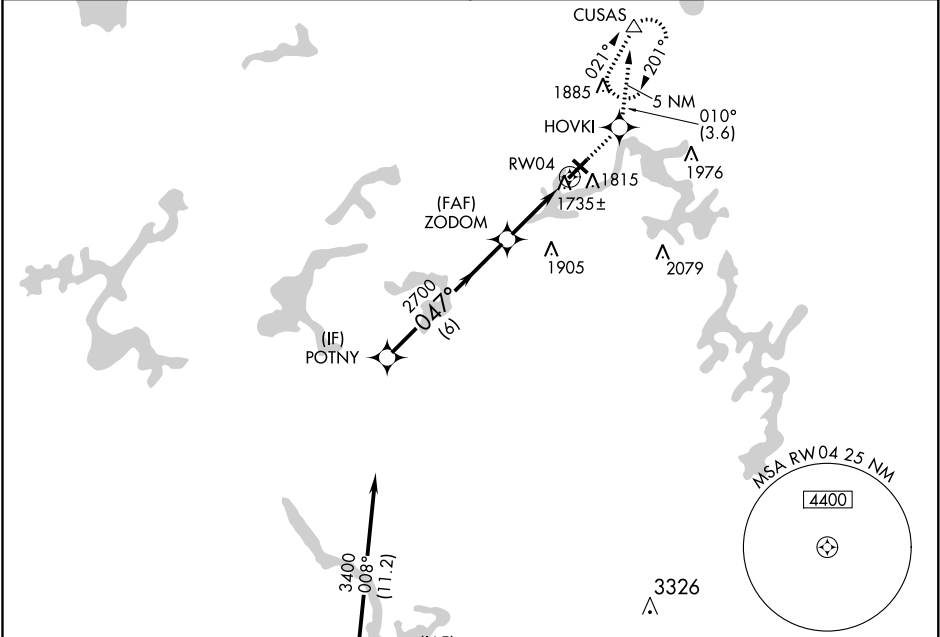
Baro-VNAV NA when using Minocqua-Woodruff altimeter setting. For uncompensated Baro-VNAV systems, LNAV/VNAV NA below -18° C (0° F) or above 44° C (112° F).

▲


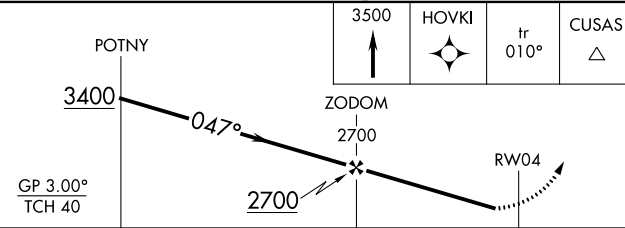



DME/DME RNP-0.3 NA. Visibility reduction by helicopters NA. If local altimeter setting not received, use Minocqua-Woodruff altimeter setting and increase all DAs/MDAs 60 feet.

MISSED APPROACH: Climb to 3500 direct HOVKI and on track 010° to CUSAS and hold.

AWOS-3 118.325	MINNEAPOLIS CENTER 133.65 281.5	UNICOM 122.8 (CTAF) 0
--------------------------	---	---------------------------------



Procedure NA for arrivals at RHI VOR/DME on airway radials 331 CW 021.

Procedure NA for arrivals at RHI VOR/DME on airway radials 331 CW 021.					 RHINELANDER RHI		
			3500 		HOVKI 	tr 010°	CUSAS 
CATEGORY	A		B		C		D
LPV DA	1970-1¼		328 (400-1¼)				
LNAV/ VNAV DA	2005-1¼		363 (400-1¼)				
LNAV MDA	2080-1 438 (500-1)		2080-1¼ 438 (500-1¼)		2080-1½ 438 (500-1½)		
CIRCLING	2120-1¼ 478 (500-1¼)		2120-1½ 478 (500-1½)		2200-2 558 (600-2)		

