

NDB FWC	APP CRS	Rwy Idg	4000
257	085°	TDZE	434
		Apt Elev	434

NDB RWY 9

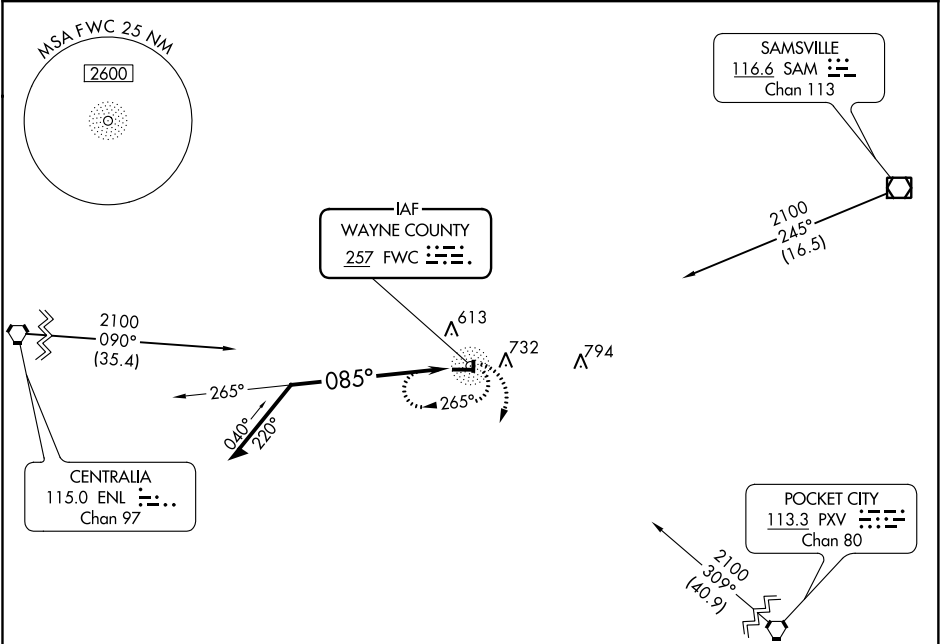
FAIRFIELD MUNI (FWC)

⚠

Night landing: Rwy 9, 27, 36 NA. Helicopter visibility reduction below 1 SM NA.

MISSED APPROACH: Climbing right turn to 2100 in the FWC NDB holding pattern.

AWOS-3 119.425	KANSAS CITY CENTER 127.7 351.825	UNICOM 123.05 (CTAF)
-------------------	-------------------------------------	-------------------------



Remain within 10 NM

2100

265°

085°

FWC NDB

1010

2100

FWC

CATEGORY	A	B	C	D
S-9	1100-1	666 (700-1)	1100-1¾ 666 (700-1¾)	NA
CIRCLING	1100-1	666 (700-1)	1100-1¾ 666 (700-1¾)	NA

REIL Rwy 9
MIRL Rwys 9-27 and 18-36

ELEV 434

TDZE 434

085° to FWC NDB

4000 X 75

0.5% UP

8 L

1999 X 60

27

36