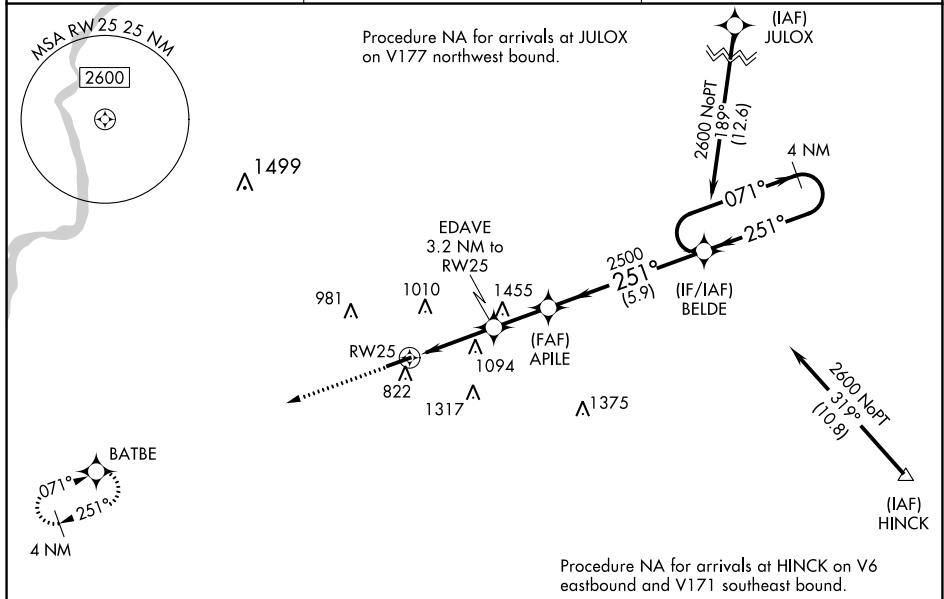


RNAV (GPS) RWY 25

MISSED APPROACH:
Climb to 2600 direct
BATBE and hold.

AWOS-3 125.2	ROCKFORD APP CON 126.0 327.0	UNICOM 122.975 (CTAF) L
------------------------	--	-----------------------------------



The diagram illustrates the VGSB glidepath, showing a 4 NM Holding Pattern at 2600 feet. The glidepath starts at 2600 feet, descends to 2500 feet at the APILE point, and then continues to 2500 feet at the BELDE point. The glidepath is defined by a 071° heading and a 251° heading. The distance from the start to the APILE point is 1.3 NM, and the distance from the APILE point to the BELDE point is 5.9 NM. The glidepath is also defined by a 1840° heading and a 2500° heading. The diagram includes a table with the following data:

CATEGORY	A	B	C	D
LPV DA	1031-1	250 (300-1)		
RNAV/VNAV	1104-1½	323 (400-1½)		
RNAV MDA	1360-1 579 (600-1)	1360-1½ 579 (600-1½)		
CIRCLING	1360-1 579 (600-1)	1680-2¾ 899 (900-2¾)	1820-3 1039 (1100-3)	

EC-3, 03 DEC 2020 to 31 DEC 2020