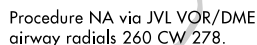


VOR/DME RWY 30
MONROE MUNI (EFT)

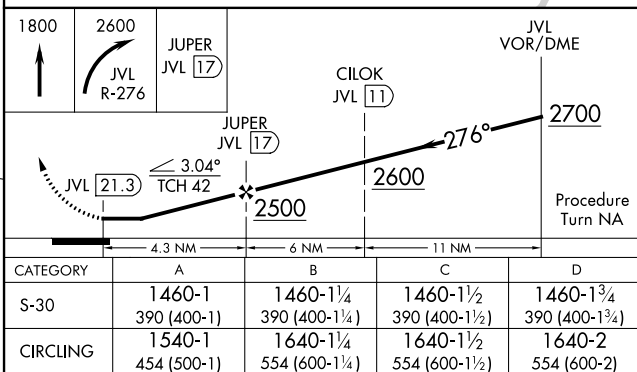
MISSED APPROACH: Climb to 1800 then climbing right turn to 2600 via JVL VOR/DME R-276 to JUPER/JVL 17 DME and hold.

UNICOM
123.05 (CTAF) **L**

MSA JVL 25 NM

3100

MIRL Rwy 12-30 and 2-20 **L**
REIL Rwy 2, 12, 20 and 30 **L**



MONROE MUNI (EFT)
VOR/DME RWY 30