
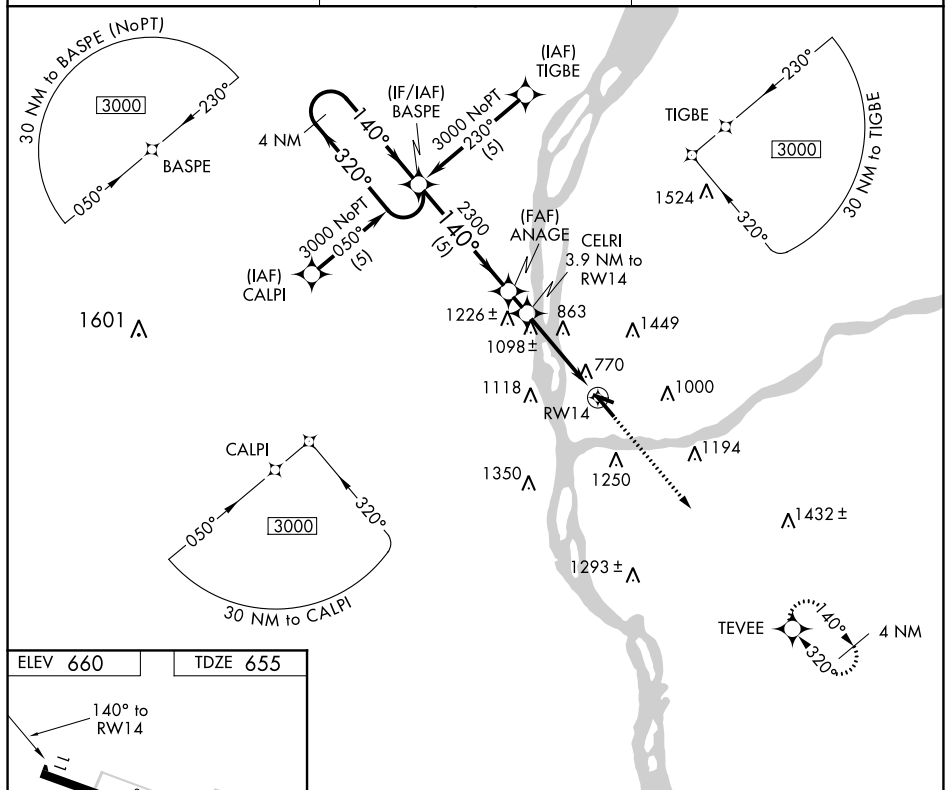


APP CRS 140°	Rwy Idg TDZE Apt Elev	5000 655 660
------------------------	-----------------------------	---

RNAV (GPS) RWY 14
PRAIRIE DU CHIEN MUNI (PDC)

	DME/DME RNP-0.3 NA. Night Landing: Rwy 11, 32 NA. Helicopter visibility reduction below $\frac{3}{4}$ SM NA.		MISSED APPROACH: Climb to 3000 direct TEVEE and hold.
	AWOS-3 119.925	CHICAGO CENTER 133.95 281.4	UNICOM 122.8 (CTAF) 0



EC-3, 03 DEC 2020 to 31 DEC 2020

EC-3, 03 DEC 2020 to 31 DEC 2020

Diagram illustrating the layout of Runways 14 and 32, and Runways 11-29 and 14-32. The diagram shows a diamond interchange configuration. Key dimensions and labels include:

- Runway 14 (top left) and Runway 32 (bottom right) are labeled with '14' and '32' respectively.
- Runway 11-29 (top right) and Runway 14-32 (bottom left) are labeled with '29' and '11' respectively.
- Dimensions: 3999 X 75 (top section) and 3000 X 75 (bottom section).
- A star symbol is located near the top right corner.

PRAIRIE DU CHIEN, WISCONSIN
Orig-C 12NOV15

43°01'N-91°07'W

PRAIRIE DU CHIEN MUNI (PDC)
RNAV (GPS) RWY 14