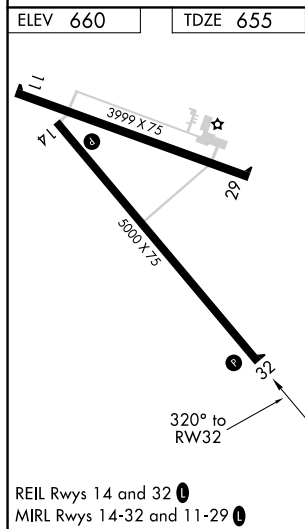


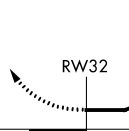


RNAV (GPS) RWY 32  
PRAIRIE DU CHIEN MUNI (PDC)

MISSED APPROACH: Climb to 3000  
direct BASPE and hold.

UNICOM  
122.8 (CTAF) **L**



<div><div>3000</div><div></div></div>		<div><div>BASPE</div><div></div></div>	<div><div>VGSI and descent angles not coincident (VGSI Angle 4.00/TCH 40).</div><div><div>4 NM Holding Pattern</div><div><div>TEVEE</div><div><div>140°→</div><div>←320°</div><div>3000</div></div></div></div></div>	
<div><div></div></div>				
CATEGORY	A	B	C	D
RNAV MDA	1560-1¼ 905 (900-1¼)	1560-2½ 905 (900-2½)		
CIRCLING	1580-1¼ 920 (1000-1¼)	1800-3 1140 (1200-3)		

EC-3, 03 DEC 2020 to 31 DEC 2020