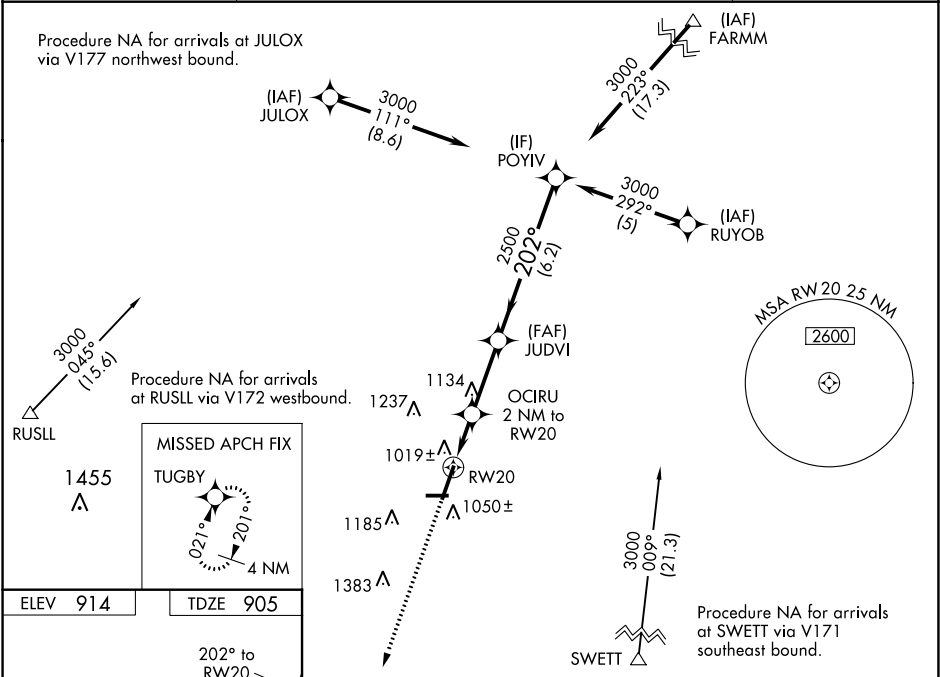


WAAS CH 50409 W20A	APP CRS 202°	Rwy Idg TDZE Apt Elev	7026 905 914
--	------------------------	-----------------------------	---

RNAV (GPS) RWY 20
DE KALB TAYLOR MUNI (DKB)

<p>Baro-VNAV NA when using Aurora altimeter setting. For uncompensated Baro-VNAV systems, LNAV/VNAV NA below -16°C (4°F) or above 47°C (116°F). DME/DME RNP-0.3 NA. Visibility reduction by helicopters NA. VDP NA when using Aurora altimeter setting. When local altimeter setting not received, use Aurora altimeter setting and increase all DA 61 feet and all MDA 80 feet; increase all LPV and LNAV/VNAV visibilities, LNAV Cat D visibility, and Circling Cats C/D visibility ¼ mile.</p>		MISSED APPROACH: Climb to 2700 direct TUGBY and hold.
AWOS-3 119.075	CHICAGO APP CON 133.5 349.0	UNICOM 122.7 (CTAF) 0



ELEV 914		TDZE 905	
202° to RW20		2700 TUGBY	
*LNNAV only.		VGSI and RNAV glidepath not coincident (VGSI Angle 3.00/TCH27).	
RW20		OCIRU 2 NM to RW20	
*1.2 NM to RW20		JUDVI	
*1580		2500	
RW20		POYIV 3000	
*1.2 NM		*0.8 NM	
*2.8 NM		*6.2 NM	
CATEGORY		A	
LPV DA		1155-¾ 250 (300-¾)	
LNAV/VNAV DA		1430-1¾ 525 (600-1¾)	
LNAV MDA		1320-1 415 (500-1)	
CIRCLING		1360-1 446 (500-1)	
		1480-1 566 (600-1)	
		1540-1¾ 626 (700-1¾)	
		1540-2 626 (700-2)	