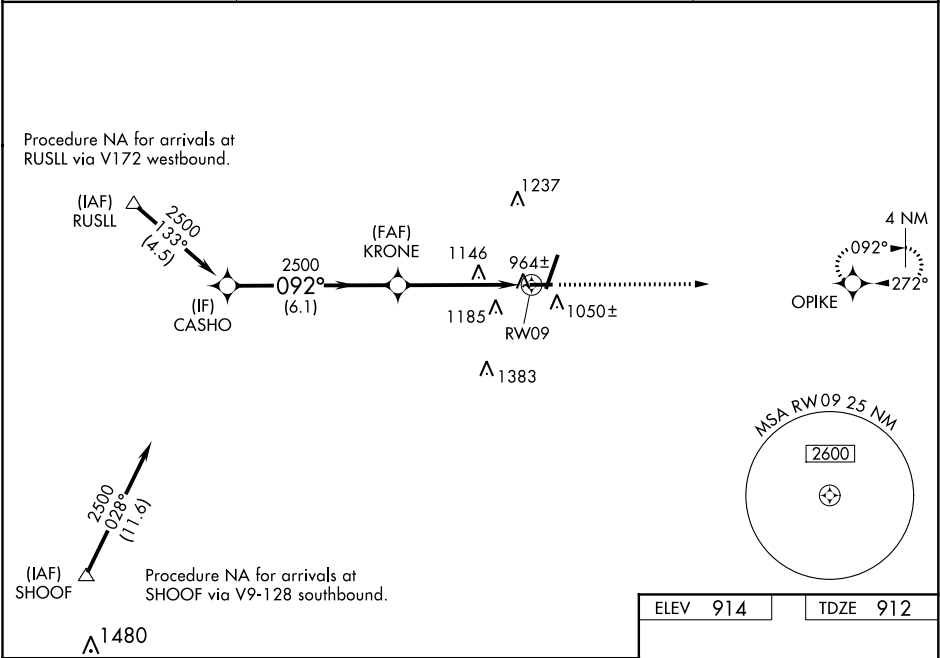


| | | | |
|--|------------------------|-----------------------------|---|
| WAAS CH 82208 W09A | APP CRS 092° | Rwy Idg TDZE Apt Elev | 4201 912 914 |
|--|------------------------|-----------------------------|---|

RNAV (GPS) RWY 9
DE KALB TAYLOR MUNI (DKB)

| | | |
|--|---|--------------------------|
| <div><div><div>▼</div><div>⚠</div></div><div><p>When local altimeter setting not received, use Aurora altimeter setting and increase all DA 61 feet and all MDA 80 feet; increase all LPV and LNAV/VNAV visibilities, LNAV Cats C/D visibility, and Circling Cats C/D visibility ¼ mile. Baro-VNAV NA when using Aurora altimeter setting. VDP NA when using Aurora altimeter setting. For uncompensated Baro-VNAV systems, LNAV/VNAV NA below -16°C (4°F) or above 47°C (116° F). DME/DME RNP-0.3 NA. Visibility reduction by helicopters NA.</p></div></div> | MISSED APPROACH: Climb to 3000 direct OPIKE and hold. | |
| AWOS-3 119.075 | CHICAGO APP CON 133.5 349.0 | UNICOM 122.7 (CTAF) 0 |



| | | | | | | |
|-------------------|--|----------------------|----------------------|----------------------|-----------------|-------|
| Procedure Turn NA | VGSI and RNAV glidepath not coincident (VGSI Angle 3.00/TCH 30). | | | | 3000 | OPIKE |
| CASHO | KRONE | | | | *LNAV only. | |
| 2500 | 2500 | | | | *1.6 NM to RW09 | |
| GP 3.00° TCH 45 | 6.1 NM | | | | 3.2 NM | |
| CATEGORY | A | B | C | D | | |
| LPV DA | 1186-1 274 (300-1) | | | | | |
| LNAV/VNAV DA | 1543-2¼ 631 (700-2¼) | | | | | |
| LNAV MDA | 1460-1 548 (600-1) | 1460-1½ 548 (600-1½) | | 1460-1¾ 548 (600-1¾) | | |
| CIRCLING | 1460-1 546 (600-1) | 1480-1 566 (600-1) | 1540-1¾ 626 (700-1¾) | 1540-2 626 (700-2) | | |

