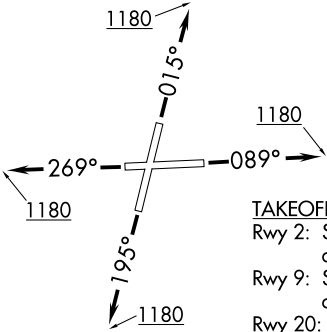


ADELL SIX DEPARTURE (RNAV)

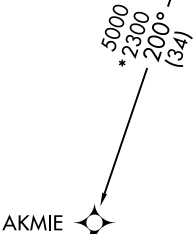
AWOS-3
118.525
CHICAGO DEP CON
119.35 354.075

TOP ALTITUDE:
3000



TAKEOFF MINIMUMS:
Rwy 2: Standard with minimum climb of 420' per NM to 2700.
Rwy 9: Standard with minimum climb of 310' per NM to 2700.
Rwy 20: Standard with minimum climb of 370' per NM to 2700.
Rwy 27: Standard with minimum climb of 340' per NM to 2700.

NOTE: RADAR required.
NOTE: DME/DME/IRU or GPS required.
NOTE: RNAV 1.
NOTE: Turbojet departures maintain 250K until advised by ATC.
NOTE: AKMIE Transition: For aircraft inbound to BMI, SPI, PIA, or as assigned by ATC.



NOTE: Chart not to scale.

DEPARTURE ROUTE DESCRIPTION
TAKEOFF RUNWAY 2: Climb heading 015° to 1180, then as assigned by ATC, for vectors to ACITO. Thence. . .
TAKEOFF RUNWAY 9: Climb heading 089° to 1180, then as assigned by ATC, for vectors to ACITO. Thence. . .
TAKEOFF RUNWAY 20: Climb heading 195° to 1180, then as assigned by ATC, for vectors to ACITO. Thence. . .
TAKEOFF RUNWAY 27: Climb heading 269° to 1180, then as assigned by ATC, for vectors to ACITO. Thence. . .
. . . . on track 200° to ADELL, then on (transition).
Maintain 3000. Expect filed altitude 10 minutes after departure.
AKMIE TRANSITION (ADELL6.AKMIE):
ARLYN TRANSITION (ADELL6.ARLYN):

EC-3, 03 DEC 2020 to 31 DEC 2020

EC-3, 03 DEC 2020 to 31 DEC 2020