

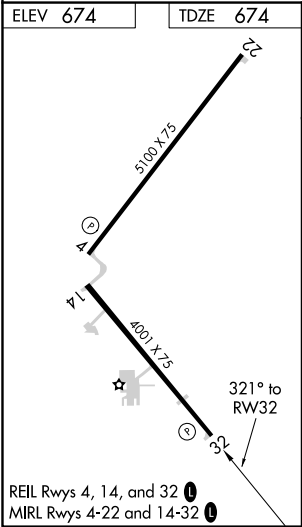
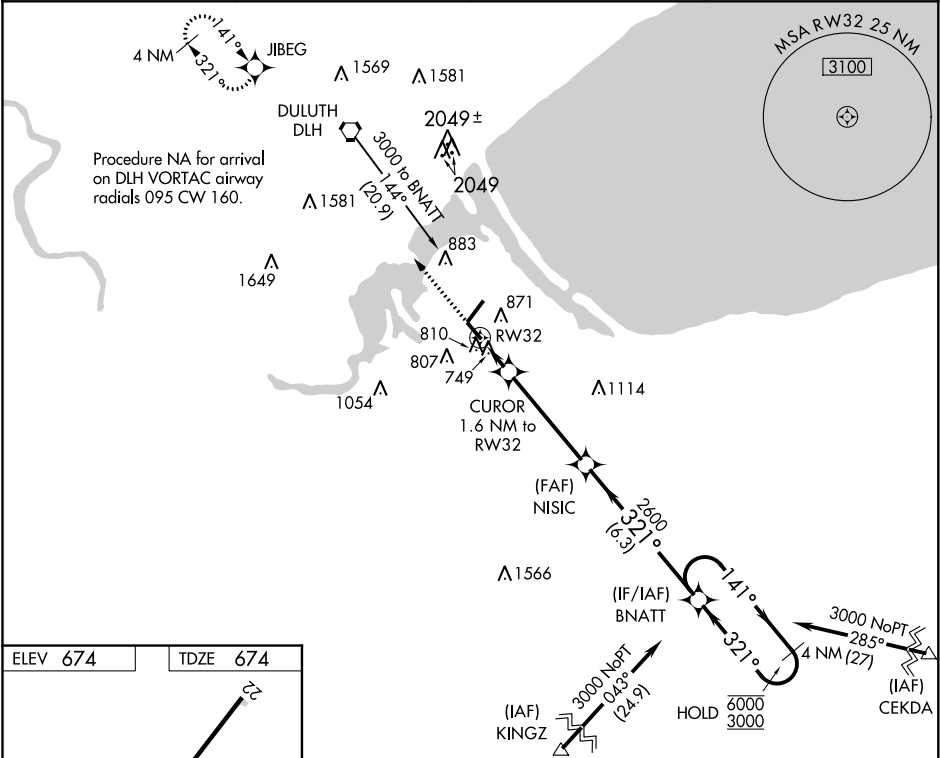
WAAS CH 72829 W32A	APP CRS 321°	Rwy Idg TDZE Apt Elev	4001 674 674
--	------------------------	-----------------------------	---

RNAV (GPS) RWY 32

RICHARD I BONG (SUW)

RNP APCH.	MISSED APPROACH: Climb to 3100 direct JIBEG and hold.
<div><div></div><div></div></div> Rwy 32 helicopter visibility reduction below ¾ SM NA.	

AWOS-3 120.35	DULUTH APP CON 125.45 233.7	CLNC DEL 124.8	UNICOM 122.7 (CTAF) 0
-------------------------	---------------------------------------	--------------------------	---------------------------------



3100	JIBEG	VGSI and descent angles not coincident (VGSI Angle 4.00/TCH 41°).		4 NM Holding Pattern
CUROR 1.6 NM to RW32	NISIC	BNATT	141° → 6000	← 321° 3000
0.9 NM to RW32	1220	2600	321°	
0.9 NM	0.7 NM	4.3 NM	6.3 NM	
CATEGORY	A	B	C	D
LP MDA	1000-1 326 (400-1)			
LNAV MDA	1060-1	386 (400-1)	1060-1½	386 (400-1½)
CIRCLING	1180-1	506 (600-1)	1180-1½ 506 (600-1½)	1240-2 566 (600-2)

EC-3, 03 DEC 2020 to 31 DEC 2020

EC-3, 03 DEC 2020 to 31 DEC 2020