

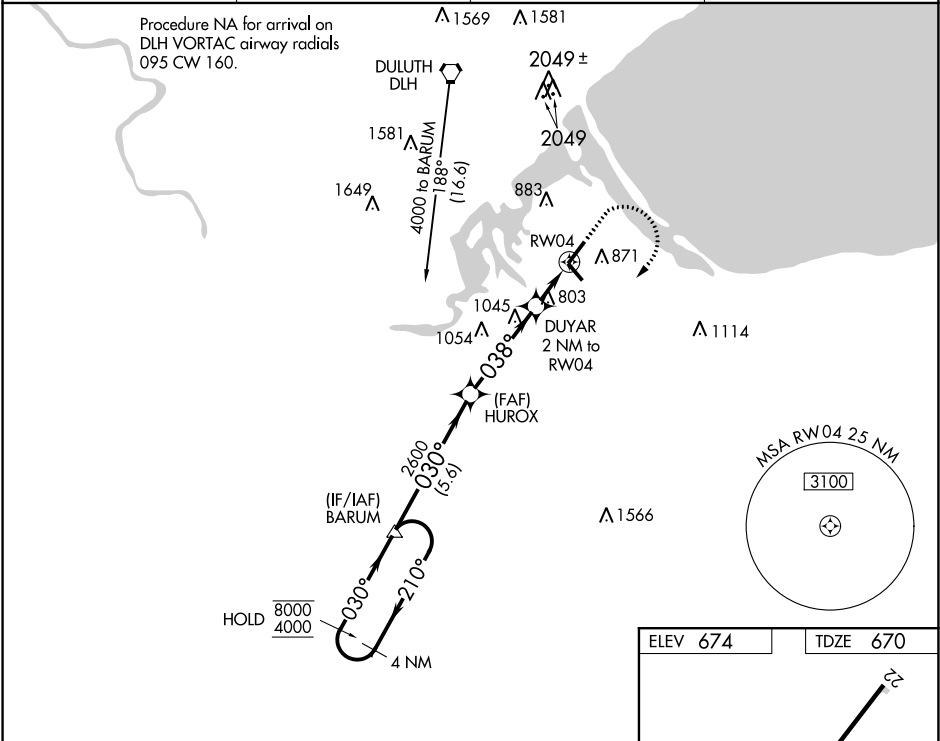
WAAS CH 63029 W04A	APP CRS 038°	Rwy Idg TDZE 670 Apt Elev 674
--	------------------------	---

RNAV (GPS) RWY 4

RICHARD I BONG (SUW)

RNP APCH.	MISSED APPROACH: Climb to 1500 then climbing right turn to 4000 direct BARUM and hold, continue climb-in-hold to 4000.
<div>▼ ▲</div>	

AWOS-3 120.35	DULUTH APP CON 125.45 233.7	CLNC DEL 124.8	UNICOM 122.7 (CTAF) 0
-------------------------	---------------------------------------	--------------------------	---------------------------------



		4 NM Holding Pattern	BARUM	HUOX	1500	4000	BARUM
		8000	4000	2600	1340		
		210°	030°	030°	038°	3.00° TCH 50	
		VGSI and descent angles not coincident (VGSI Angle 3.00/TCH 28).					
		5.6 NM	3.9 NM	0.9	1.1 NM		
CATEGORY	A	B	C	D			
LP MDA	1060-1	390 (400-1)	1060-1½	390 (400-1½)			
LNAV MDA	1080-1	410 (500-1)	1080-1½	410 (500-1½)			
CIRCLING	1180-1	506 (600-1)	1180-1½	1240-2	506 (600-1½)	566 (600-2)	

