

APP CRS  
**043°**

Rwy Idg  
**4000**

TDZE  
**429**

Apt Elev  
**429**

RNAV (GPS) RWY 4

MOUNT CARMEL MUNI (AJG)

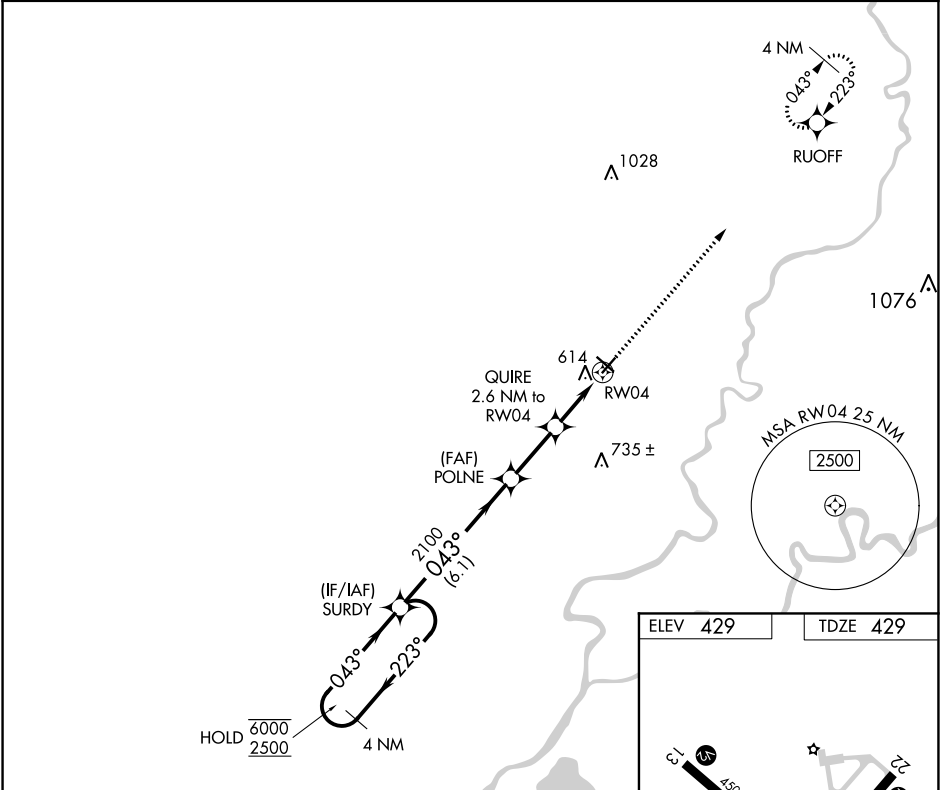
RNP APCH.

▼

Rwy 4 helicopter visibility reduction below ¾ SM NA.  
For uncompensated Baro-VNAV systems, LNAV/VNAV NA below -15°C or above 54°C.

MISSED APPROACH: Climb to 2500 direct RUOFF and hold.

AWOS-3 <b>134.9</b>	EVANSVILLE APP CON★ <b>125.6 343.7</b>	UNICOM <b>122.7</b> (CTAF) <b>0</b>
------------------------	---	--



4 NM Holding Pattern

SURDY

VGSI and RNAV glidepath not coincident (VGSI Angle 3.00/TCH 23).

2500 RUOFF

6000 ← 223°

2500 → 043°

GP 3.00°

TCH 40

043°

POLNE

2100

QUIRE

2.6 NM to RW04

\*LNAV only

\*1.5 NM to RW04

RW04

6.1 NM

2.5 NM

1.1 NM

1.5 NM

CATEGORY	A	B	C	D
LNAV/VNAV	DA	937-1¾ 508 (600-1¾)	920-1¼ 491 (500-1¼)	NA
LNAV MDA	920-1 491 (500-1)	920-1¼ 491 (500-1¼)	920-1¼ 491 (500-1¼)	NA

ELEV 429

TDZE 429

13

22

31

4500 X 75

4000 X 100

043° to RW04

REIL Rwy 4, 13, 22 and 31 **0**

MIRL Rwy 4-22 and 13-31 **0**

EC-3, 03 DEC 2020 to 31 DEC 2020

EC-3, 03 DEC 2020 to 31 DEC 2020